



PROJECT: TRILUX PARKHAUS NEHEIM

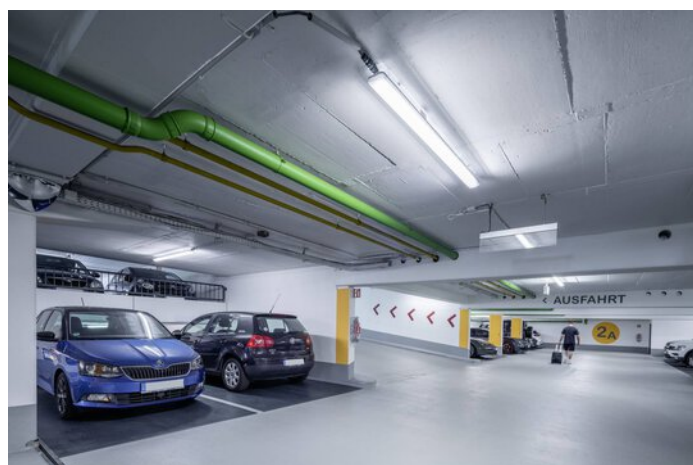
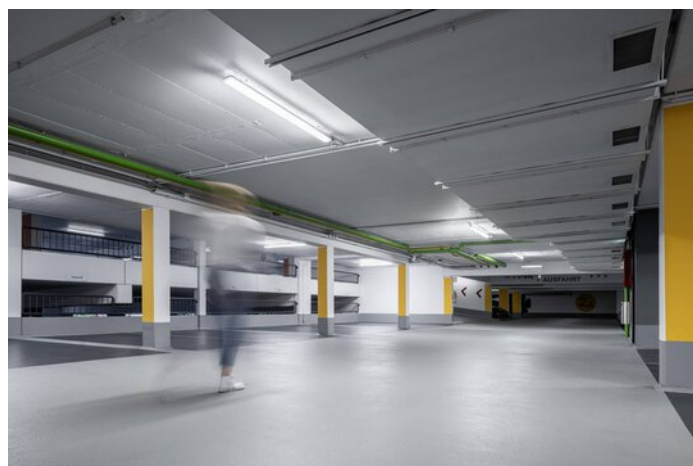
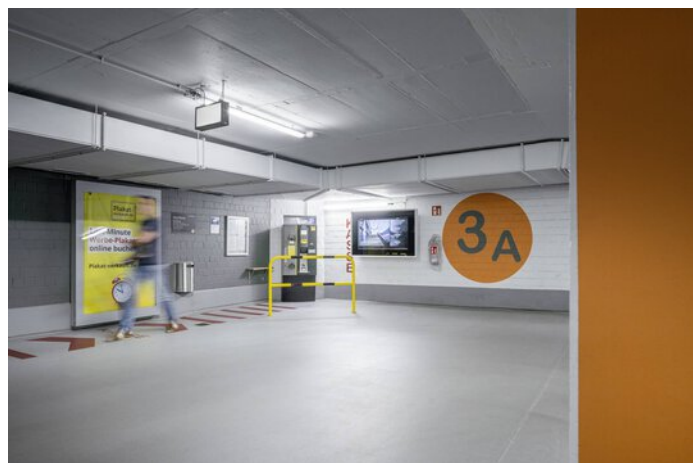


Project information

City: 59755 Arnsberg / Germany

# PROJECT DETAILS

## Project images





## Products used



### **Aragon Fit LED surface-mounted luminaire IP66**

The new level for weather-proof luminaires: Aragon Pro LED combines the highest quality of light and efficiency, and can be perfectly adapted to on-site requirements thanks to its modular design. To achieve minimum energy consumption and maximum convenience the luminaires can be quickly and easily networked, either via DALI or radio.

---



### **LiveLink Premium**

Optimum, individually adapted light with minimum effort – now achieved thanks to the intuitive and reliable control of all light points. The simply installed, intelligent LiveLink light management system developed by TRILUX together with the sensor manufacturer STEINEL enables the highly simple planning and operation of even complex lighting system controls. The system features especially simple commissioning, deemed one of the major challenges with control systems – LiveLink intuitively guides planners and installers through pre-configured rooms with typical applications. Commissioning and operation is implemented using a graphical user interface on mobile iOS or Android end devices. With LiveLink, TRILUX offers simple and intelligent access to the world of light control.

---