



## PROJECT: HANSEWERK AG QUICKBORN



### Project information

Architect: Die Planstelle GmbH

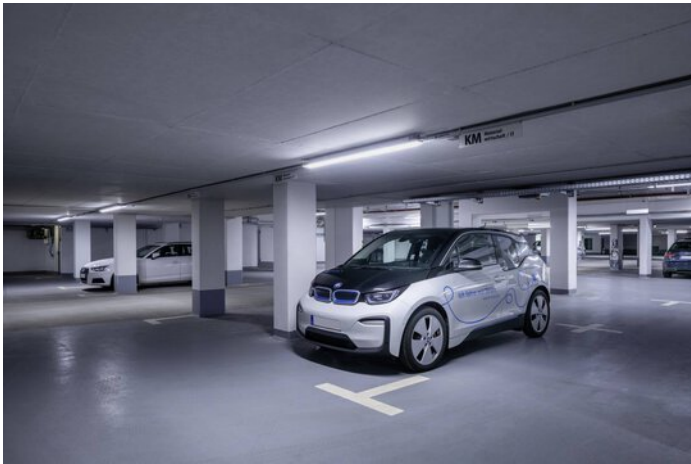
City: 25451 Quickborn / Germany

## PROJECT DETAILS

### Project images

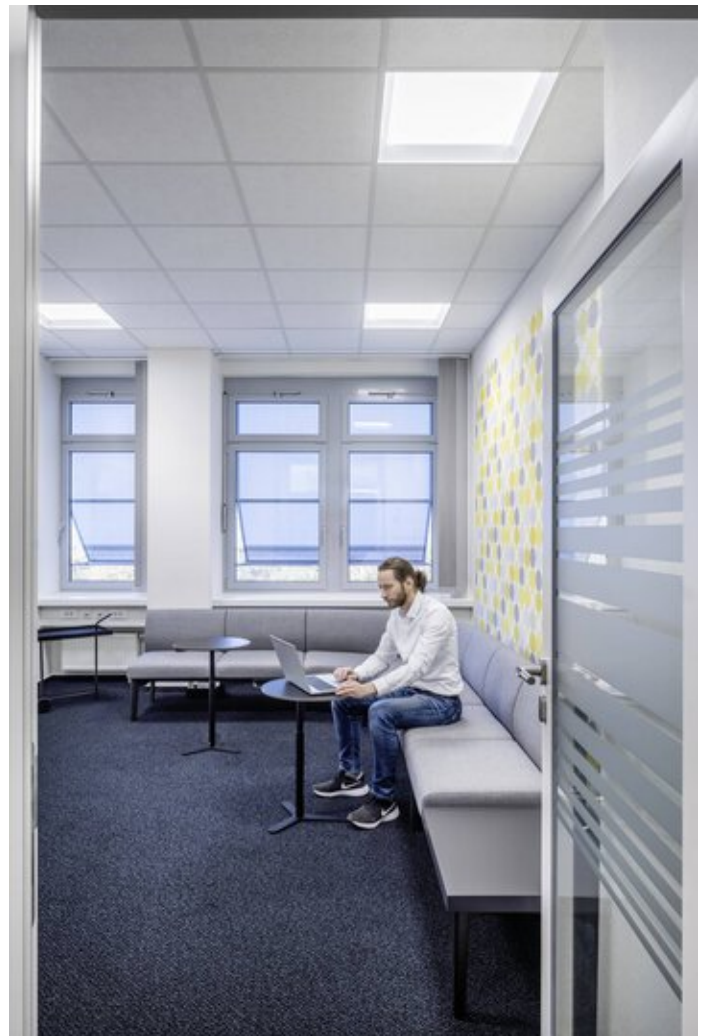














## Products used



### **8841 LED bollard**

The 8841 LED product range scores with a characteristically high-profile appearance and a diversity of luminaire versions. Various wide light distributions and different luminous flux packages provide maximum visual comfort and guarantee perfect illumination, enabling large spacing between the bollards.

---



### **Jovie**

Thanks to Multi-Lens Technology (MLT<sup>IQ</sup>) and various switching variants, Jovie LED can be perfectly adapted to individual project-related requirements, e.g. as a Smart Lighting Ready variant with Zhaga interfaces for a light management system. Also ideal for later retrofitting.

---



### **Amatris LED downlight ceiling cutout Ø 120/200 mm**

In terms of luminaire luminous flux, the compact Amatris recessed LED downlight with 1400 lm and 1900 lm is one of the big boys. With its reduced bezel ring and white reflector, the luminaire can be integrated into almost all surroundings.

---



### **Lumena Star 40**

The robust Lumena Star 40 provides energy-efficient light precisely according to the needs of the outdoor application thanks to MLTIQ technology. The all-rounder can be equipped with light management functionality, enabling maximum energy savings due to intelligent control. Thanks to its flexible lens system, Lumena Star 40 provides safety and security in outdoor workplaces and outdoor areas – even with wide luminaire spacing.

---