

## PROJECT: DRK SOZIALE DIENSTE MESCHEDA GMBH



### Project information

City: 59872 Meschede / Germany

---

## PROJECT DETAILS

### Project images







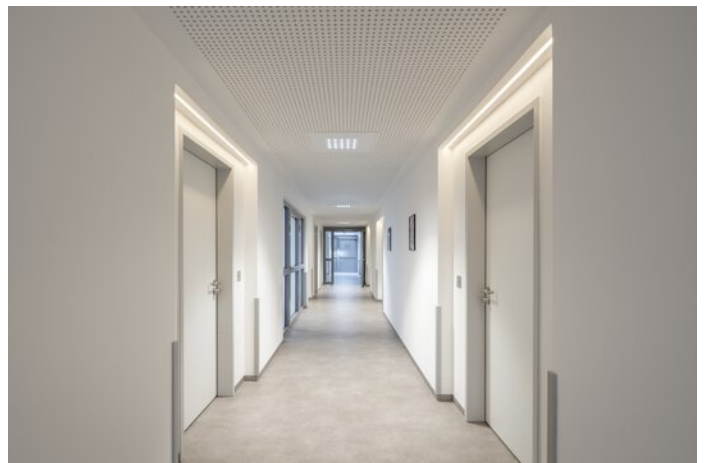
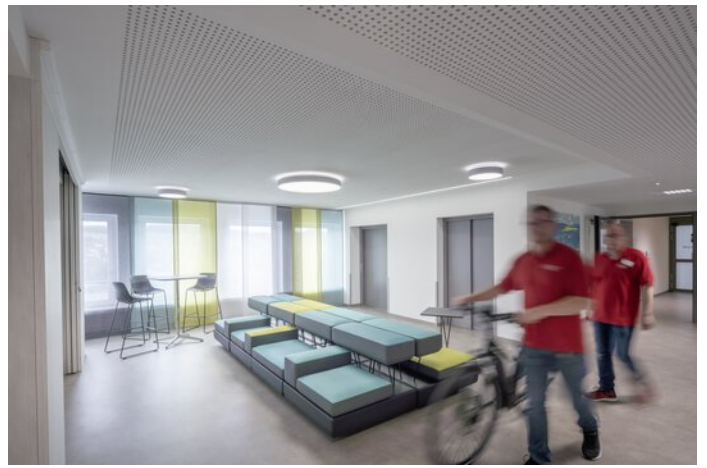


















## Products used



### **Creavo LED recessed ceiling luminaires**

Creavo is the ideal solution for directional light in the office: three optics with ConVision® technology, various module sizes and four mounting methods are available. Typical for the luminaire range: light chambers as an element of design. Light management, emergency light and location-based services can also be implemented via the IoT harbour.



### **Luceos D surface-mounted luminaire**

Luceos ensures optimum visual conditions and an attractive atmosphere thanks to uniform, glare-free planar light. With its modular design and simply attachable function end caps, the continuous line-capable range of luminaires adapts optimally to the specific framework conditions.



### **Solegra LED surface-mounted luminaire**

Solegra LED floats below the ceiling like a large sun. With its uniform, glare-free light and modern, purist design this series of round luminaires lends any room a special look, and is ideal for e.g. creative zones, VDU workstations and prestigious sales spaces.



### **Olisq R LED surface-mounted luminaire**

An extremely versatile product range that can be used to attractively illuminate all entrance, recreation and transit zones such as corridors, stairways, forums and foyers in compliance with standards. There is a choice of three shapes, each in several sizes, which can be perfectly adapted to the individual application in terms of mounting method, lighting technology, protection rating etc. The wide range of variants allows building areas to be zoned, while the range-typical high quality design creates a holistic solution with a single look.



### **982... Indirect luminaires**

Six variants with the same aim: to bring efficiency and elegance into towns and cities. The luminaires of the 98... series unite classic design with state-of-the-art LED technology.



### **8841 LED bollard**

The 8841 LED product range scores with a characteristically high-profile appearance and a diversity of luminaire versions. Various wide light distributions and different luminous flux packages provide maximum visual comfort and guarantee perfect illumination, enabling large spacing between the bollards.



**ConStela**



**Skeo Q**

The Skeo Q LED family includes square wall and ceiling luminaires, spotlights and bollard luminaires. During daylight the purist, modern shape blends harmoniously into its surroundings and sets attractive accents. At night the flexible family of luminaires displays paths and facades using high quality, energy-efficient light adapted perfectly to the framework conditions.