



## PROJECT: CAMPUS BRUGG



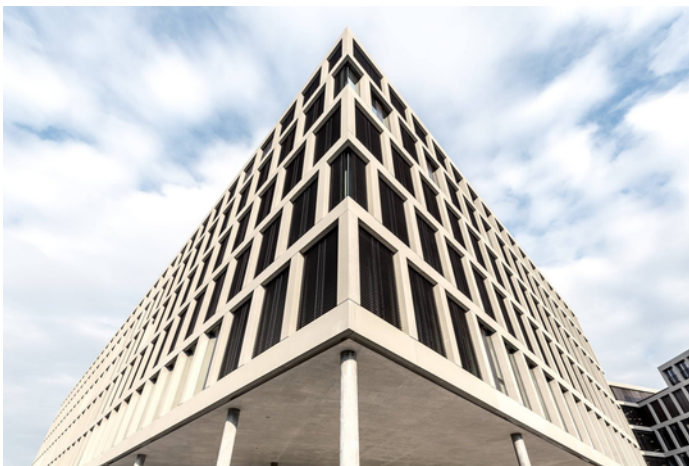
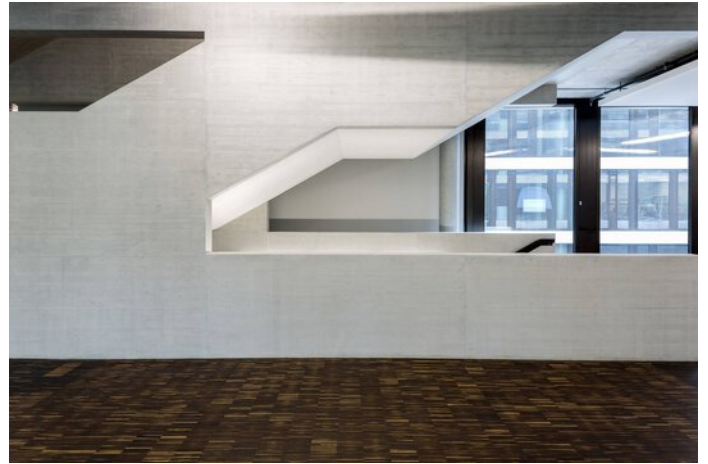
### Project information

Architect: Büro B

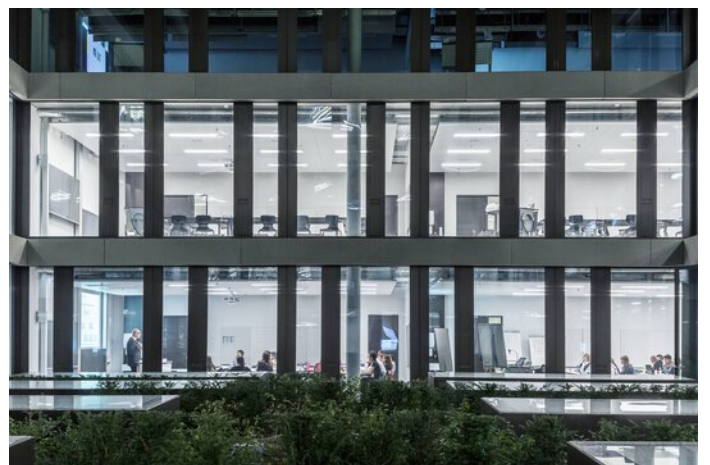
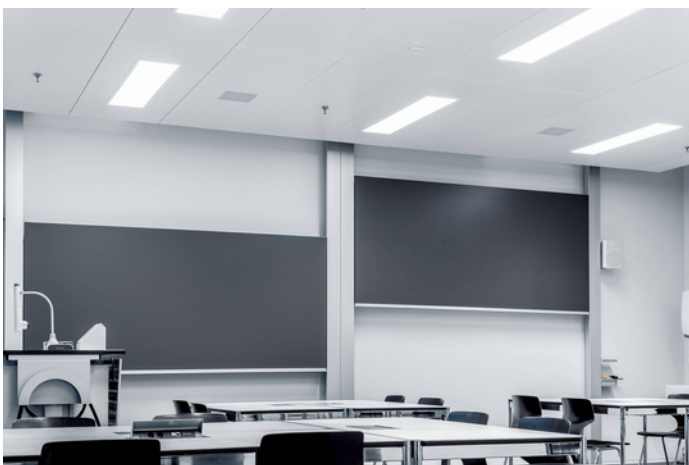
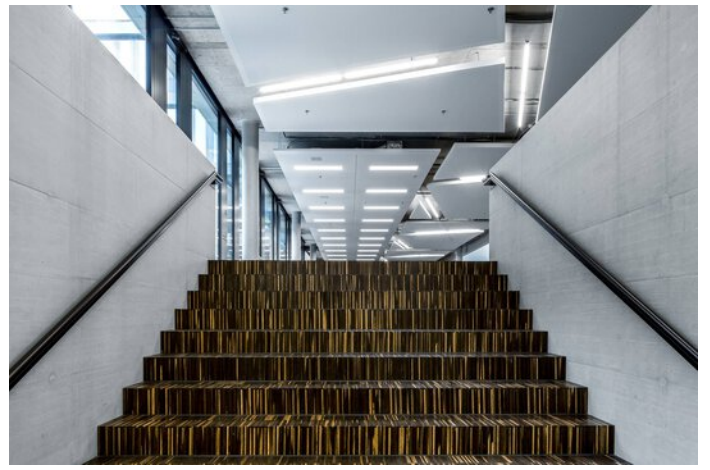
City: 5210 Windisch / Switzerland

## PROJECT DETAILS

### Project images









## Products used



### **Belviso C1 LED ceiling-recessed luminaire**

The Belviso luminaire family represents high quality lighting solutions together with glare-free light and unusual lighting effects. The design of the Belviso Cassette as a pure surface is enlivened by the precisely delineated light contour. The colour-illuminated light frame is available optionally and achieves an emotional upgrading of the lighting design. Five expressive alternatives mean that room-specific or individual colour codings can be selected.

---