



## PROJECT: BIEZE FOOD GROUP



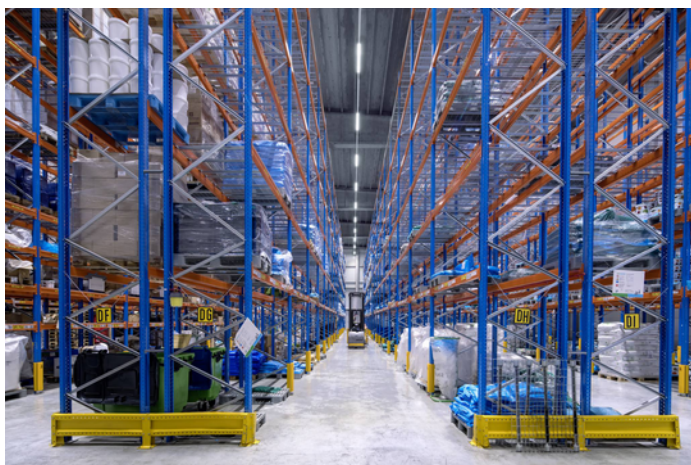
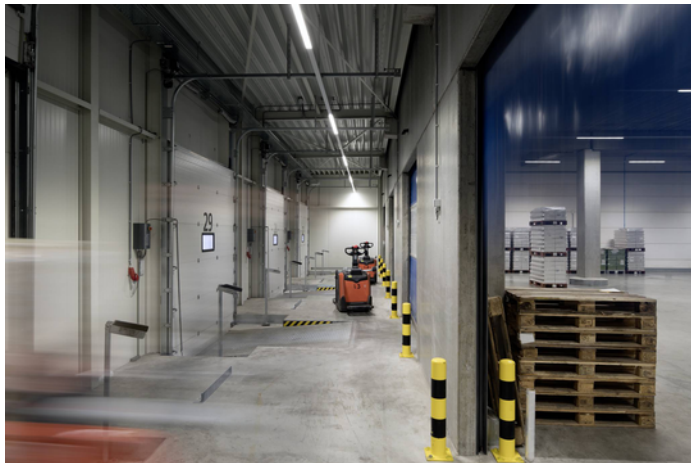
### Project information

Architect: Van Bokhorst Architecten BNA

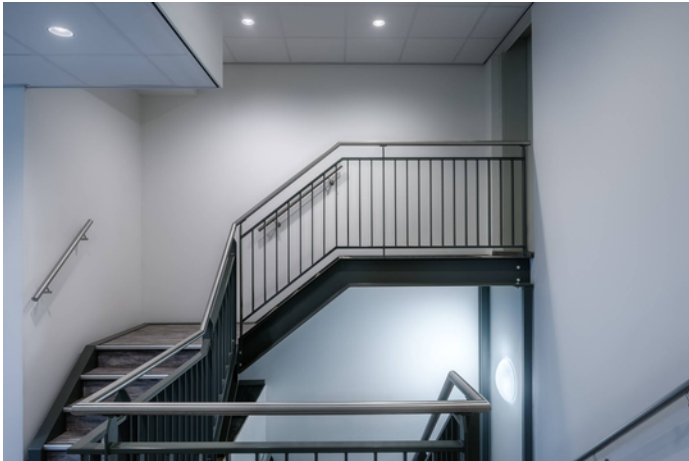
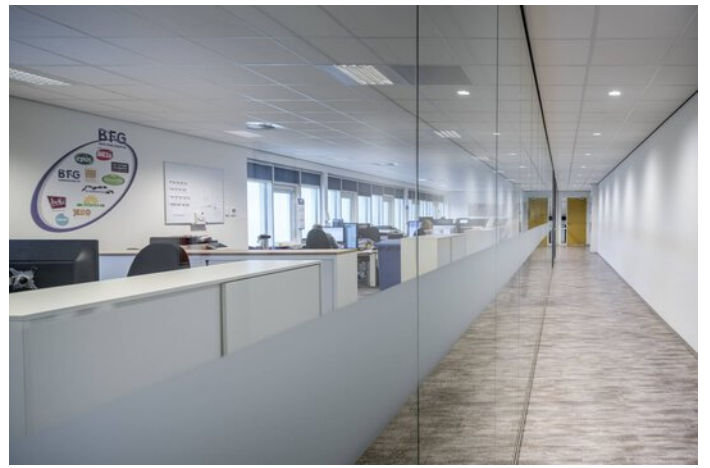
City: 3861 NJ Nijkerk / Netherlands

# PROJECT DETAILS

## Project images







## Products used



### **Inperla Ligra Plus C05 LED downlight ceiling cutout Ø 140 mm**

Refurbishing was never so simple as with the easy-mounting and flexible Ligra Plus LED. With the cladding covers, the luminaire fits into nearly all existing ceiling cutouts and if required can be connected via mains through-wiring from luminaire to luminaire to save time. The Ligra Plus LED is available with different luminous flux packages and beam characteristics for the optimal illumination of a wide variety of rooms. All versions fulfil maximum demands for visual comfort and energy efficiency. And thanks to the diverse design versions, the Ligra Plus LED always blends harmoniously into the interior design.

---



### **Nextrema LED surface-mounted luminaires IP66**

Ice cold or boiling hot, damp or dusty – no problem for the Nextrema LED with its robust die-cast aluminium body in cold stores, food production facilities, distribution centres or car parks at temperatures of -30°C to +35°C. In addition to its robust exterior, the luminaire's quality of light is also impressive throughout: the light is pleasantly homogeneous, glare-free and especially energy-efficient. Installation is also particularly simple and time-saving thanks to a number of clever functions.

---