



## PROJECT: KUKO - KULTUR- UND KONGRESSZENTRUM



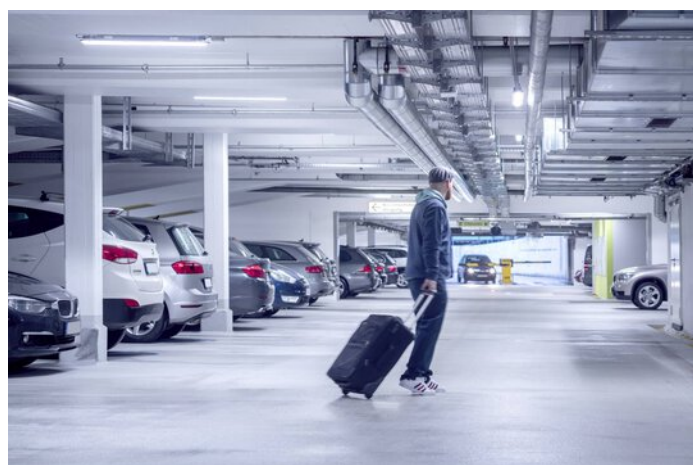
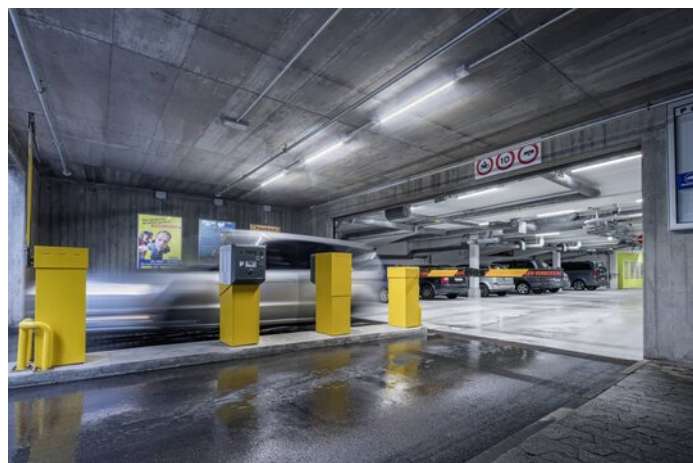
### Project information

City: 83022 Rosenheim / Germany

---

# PROJECT DETAILS

## Project images





## Products used



### **Nextrema LED surface-mounted luminaires IP66**

Ice cold or boiling hot, damp or dusty – no problem for the Nextrema LED with its robust die-cast aluminium body in cold stores, food production facilities, distribution centres or car parks at temperatures of  $-30^{\circ}\text{C}$  to  $+35^{\circ}\text{C}$ . In addition to its robust exterior, the luminaire's quality of light is also impressive throughout: the light is pleasantly homogeneous, glare-free and especially energy-efficient. Installation is also particularly simple and time-saving thanks to a number of clever functions.

---