



## PROJECT: KÜHNE + NAGEL HAMBURG



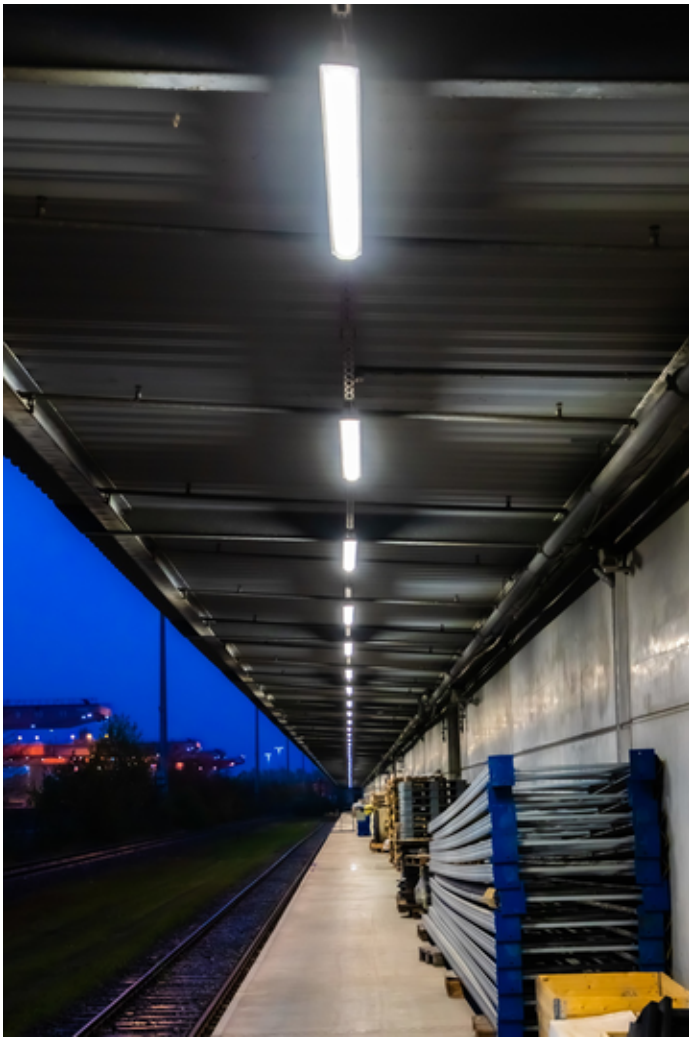
### Project information

City: 21129 Hamburg / Germany

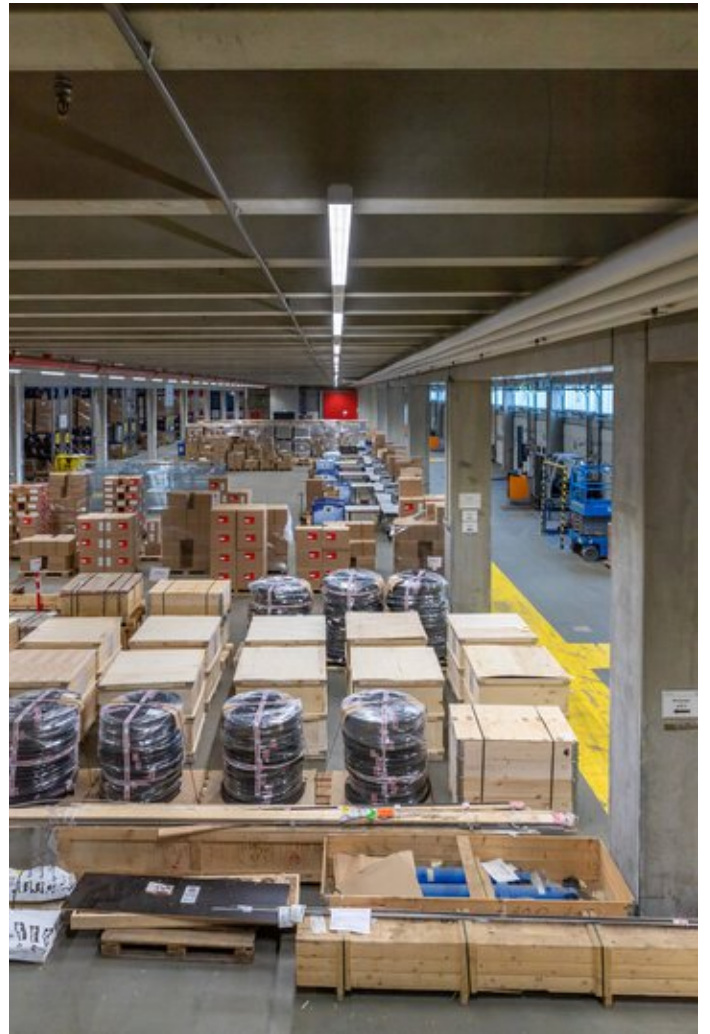
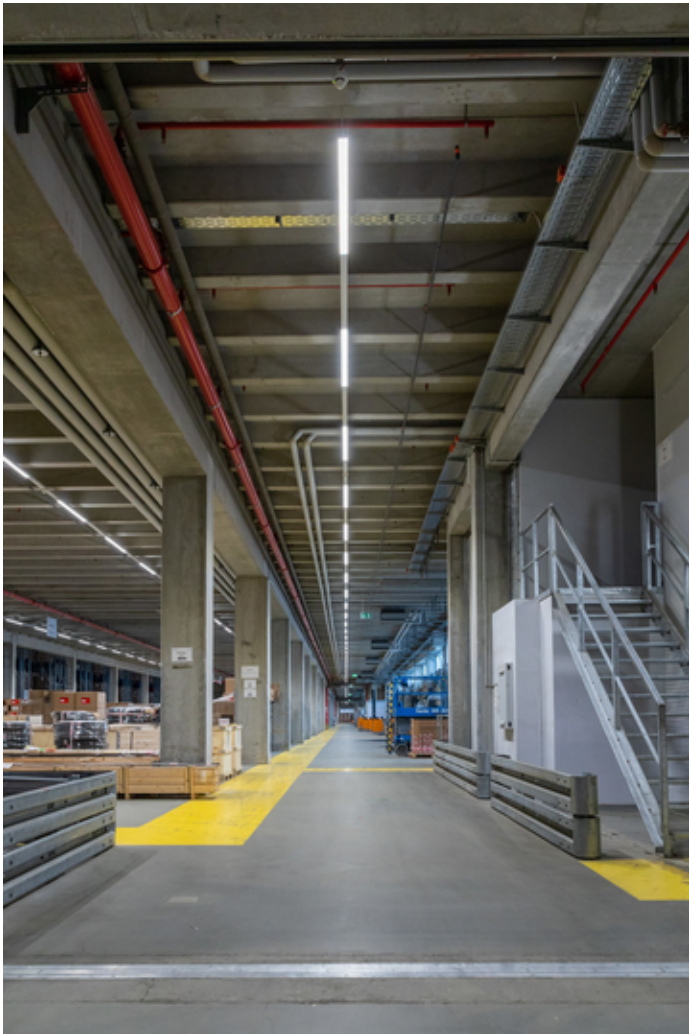
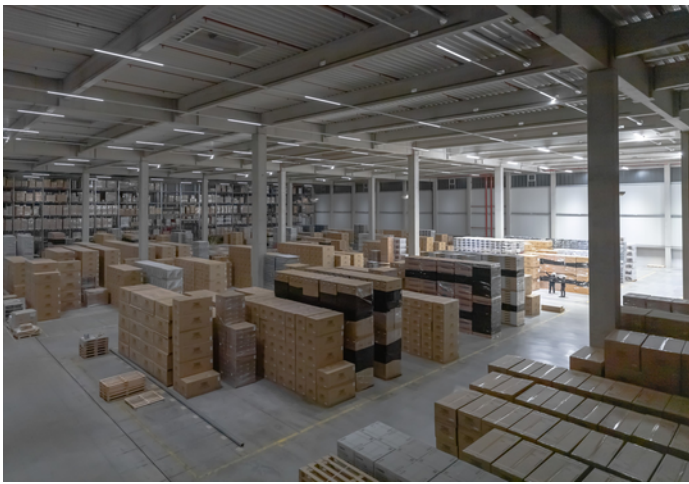
---

## PROJECT DETAILS

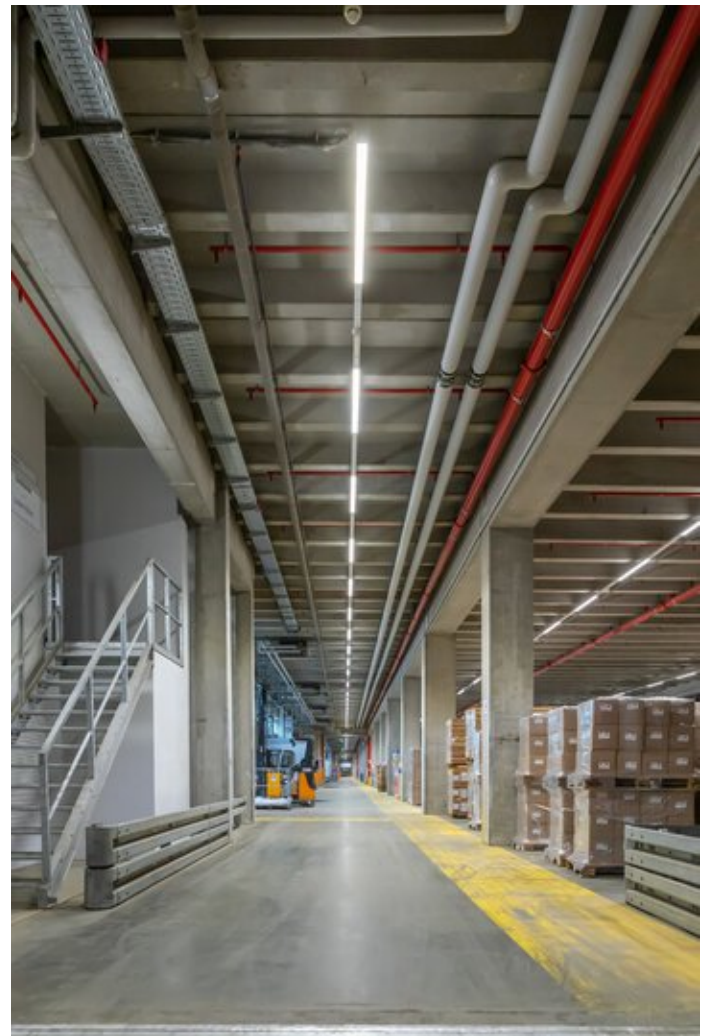
### Project images







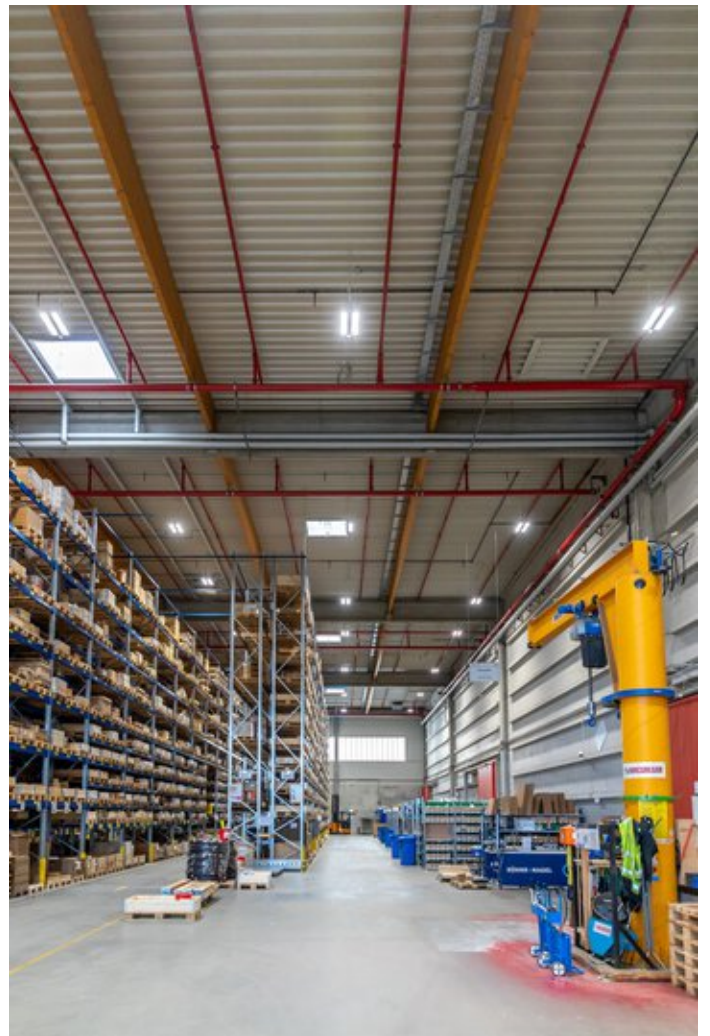
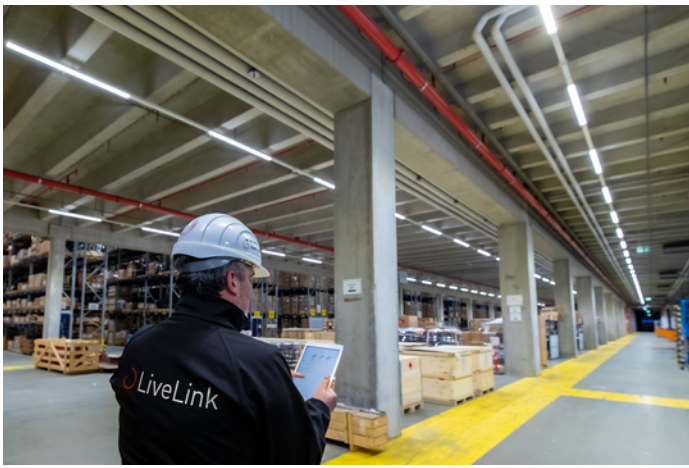


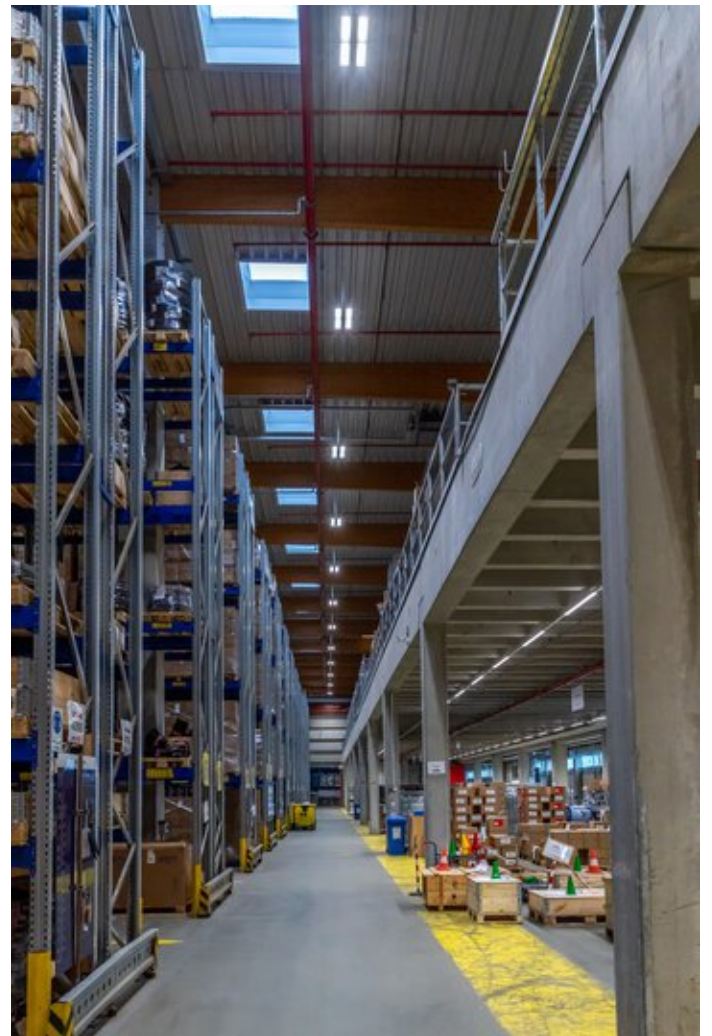




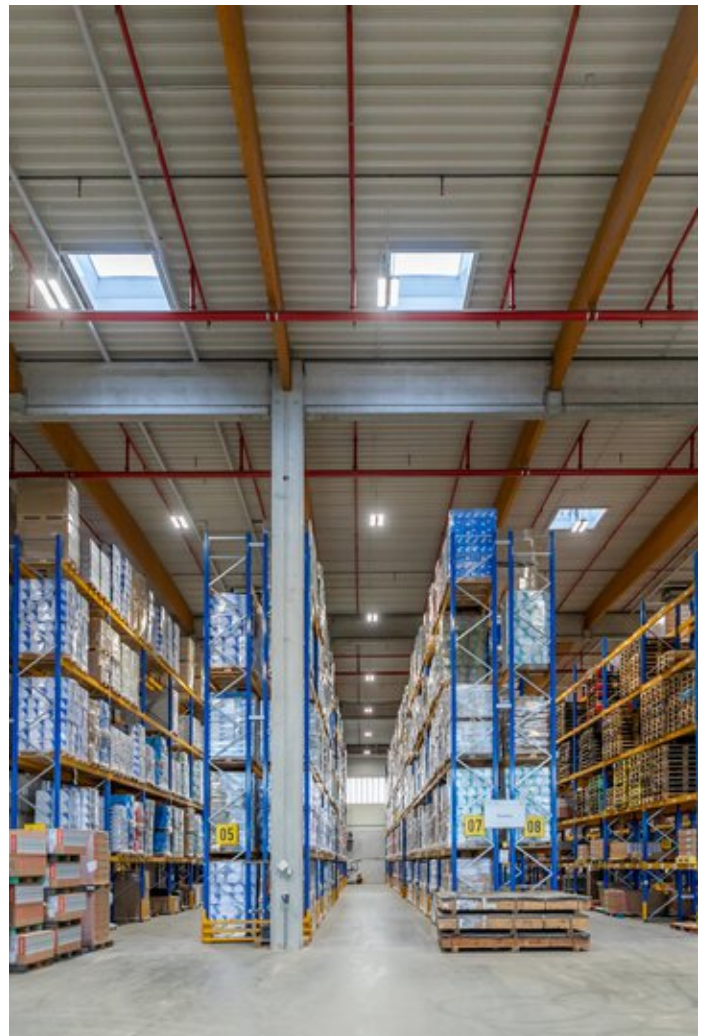














## Products used



### **Jovie**

Thanks to Multi-Lens Technology (MLT<sup>IQ</sup>) and various switching variants, Jovie LED can be perfectly adapted to individual project-related requirements, e.g. as a Smart Lighting Ready variant with Zhaga interfaces for a light management system. Also ideal for later retrofitting.

---



### **E-Line NEXT LED modular continuous line**

Still in the portfolio for the refurbishment and expansion of existing systems: the E-Line Fix continuous line system with trunking that has been tried and tested for many years. This ensures continuity and investment security for our customers and E-Line users - and is what the TRILUX after-sales promise stands for.

---



### **Mirona Fit LED highbay luminaire**

Mirona Fit LED is the perfect lighting solution for challenging industrial surroundings. Thanks to its wide range of versions it is suitable for e.g. use in warehouses and distribution halls and the heavy industry and foodstuff industry, and emits reliable, uniform, glare-free light.

---



### **Aragon Fit LED surface-mounted luminaire IP66**

The new level for weather-proof luminaires: Aragon Pro LED combines the highest quality of light and efficiency, and can be perfectly adapted to on-site requirements thanks to its modular design. To achieve minimum energy consumption and maximum convenience the luminaires can be quickly and easily networked, either via DALI or radio.

---