



PROJECT: ESCLAT - SALOU

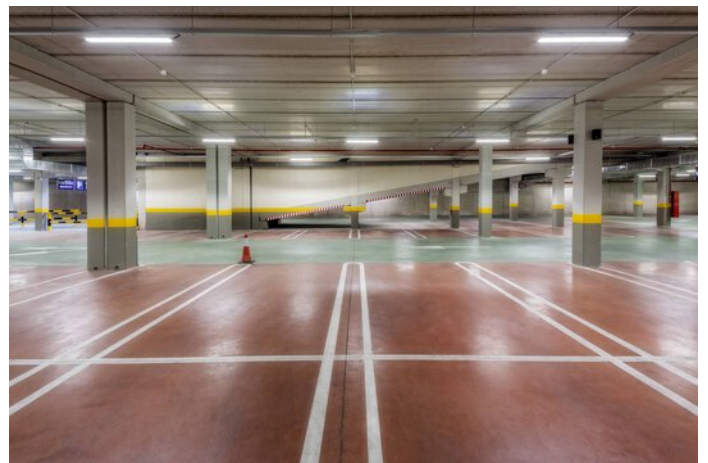


Project information

City: 43840 Salou, Tarragona / Spain

# PROJECT DETAILS

## Project images









## Products used



### **Nextrema LED surface-mounted luminaires IP66**

Ice cold or boiling hot, damp or dusty – no problem for the Nextrema LED with its robust die-cast aluminium body in cold stores, food production facilities, distribution centres or car parks at temperatures of -30°C to +35°C. In addition to its robust exterior, the luminaire's quality of light is also impressive throughout: the light is pleasantly homogeneous, glare-free and especially energy-efficient. Installation is also particularly simple and time-saving thanks to a number of clever functions.

---



### **Siella LED ceiling-recessed luminaire**

Siella has already proven itself over seven product generations in office environments thanks to high energy efficiency, simple installation, pleasant light and low investment costs. Now the next technological advance is just around the corner. The eighth generation offers even more flexibility in use thanks to up to 4 multilumen and 2 multicolour settings. Thanks to two different optical systems, a microprismatic and a translucent optic, Siella allows lighting concepts for a wide variety of office areas (UGR22 or UGR19) to be implemented with just one product range. In combination with the consistently subsidy-eligible energy efficiency, this makes Siella G8 the standard solution for flexible office lighting.

---