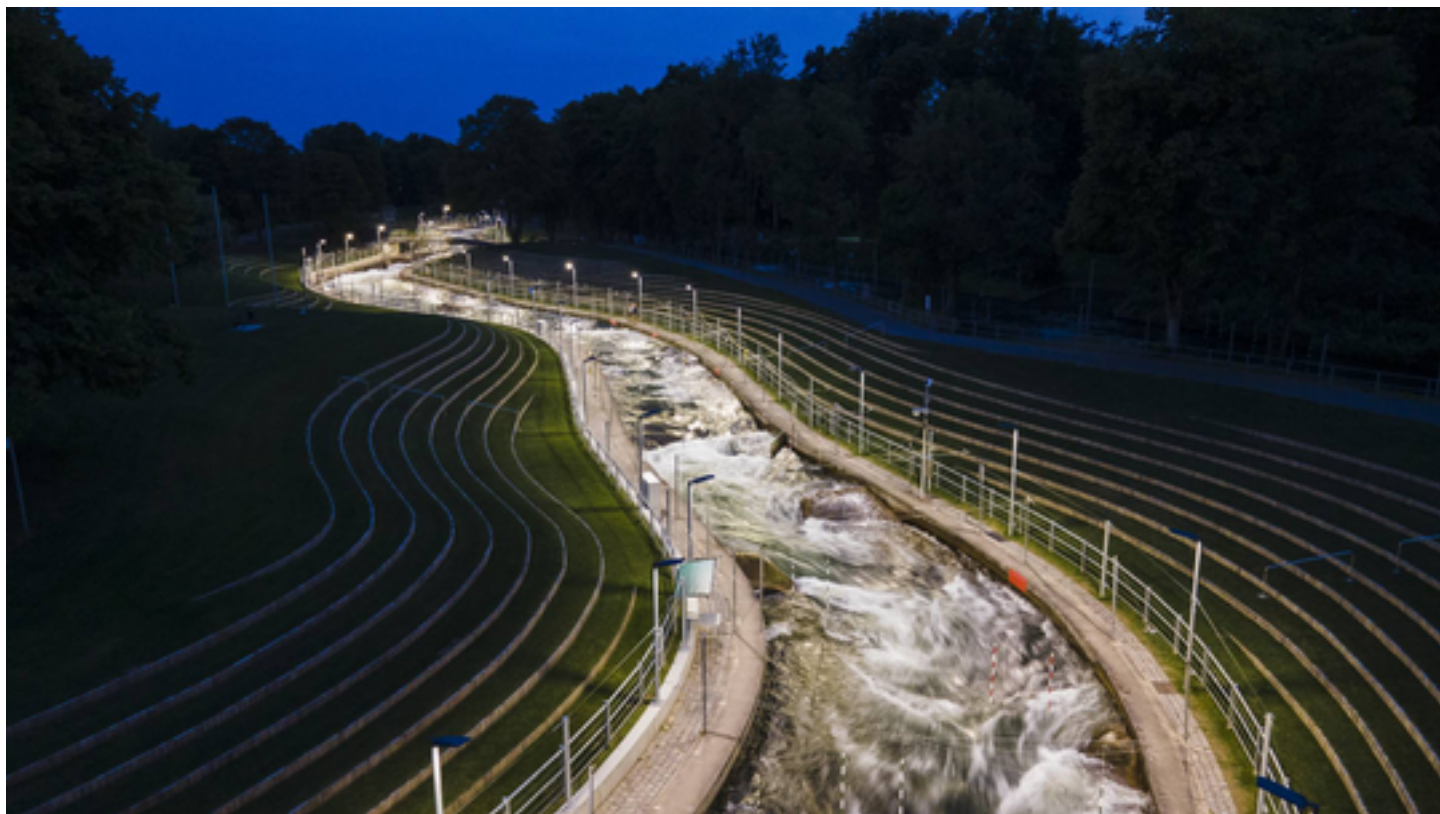


## PROJECT: EISKANAL AUGSBURG



### Project information

City: 86161 Augsburg / Germany

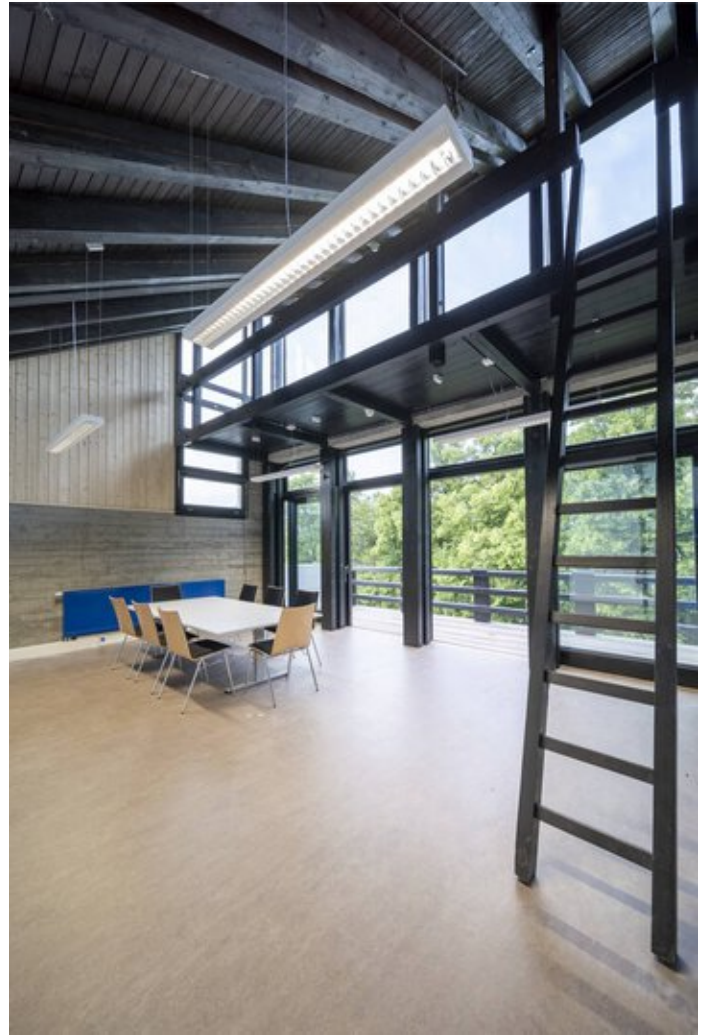
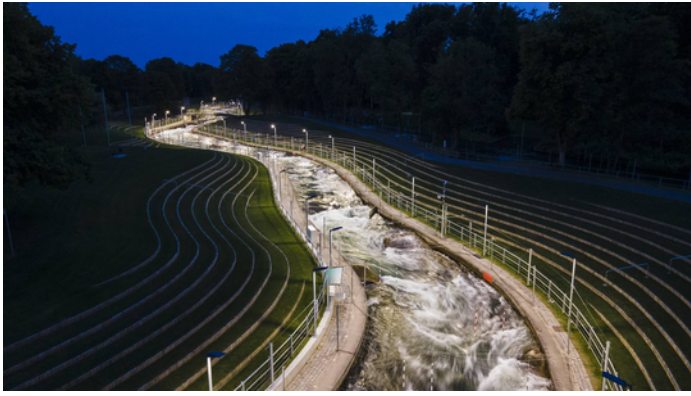
---

## PROJECT DETAILS

### Project images













## Products used



### **Jovie**

Thanks to Multi-Lens Technology (MLT<sup>IQ</sup>) and various switching variants, Jovie LED can be perfectly adapted to individual project-related requirements, e.g. as a Smart Lighting Ready variant with Zhaga interfaces for a light management system. Also ideal for later retrofitting.



### **Luceos D surface-mounted luminaire**

Luceos ensures optimum visual conditions and an attractive atmosphere thanks to uniform, glare-free planar light. With its modular design and simply attachable function end caps, the continuous line-capable range of luminaires adapts optimally to the specific framework conditions.