



## PROJECT: AUDAX WIRTSCHAFTSPRÜFER & STEUERBERATER



### Project information

City: 59823 Arnsberg / Germany

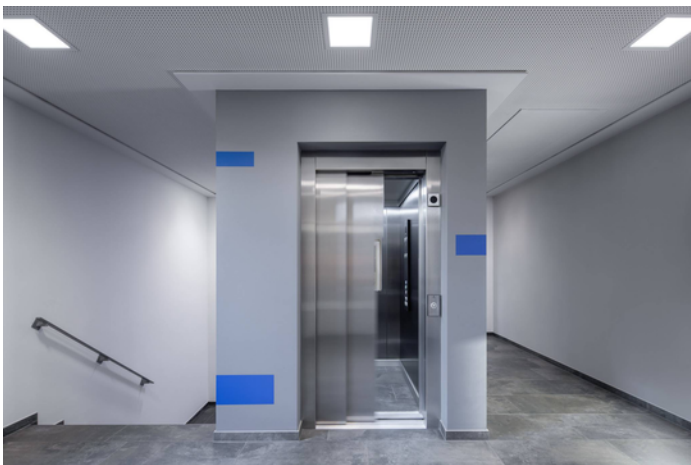
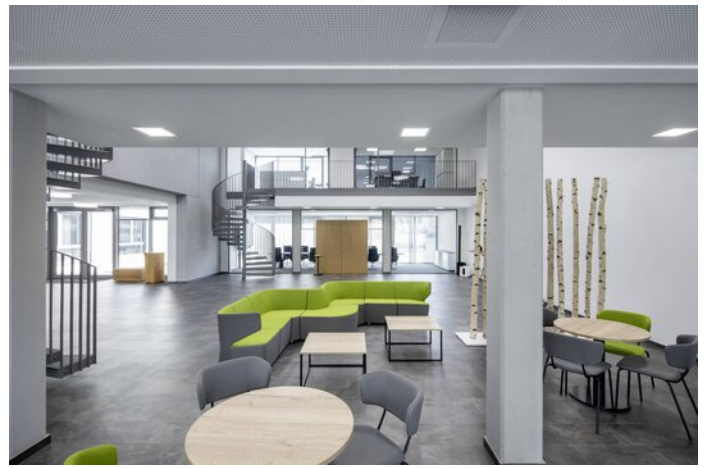
---

## PROJECT DETAILS

### Project images

















## Products used



### **Altigo G2 ground recessed luminaires**

The linear Altigo luminaire family sets elegant accents not only at ground level but also on walls and ceilings. The targeted light control of the symmetric and asymmetric optics ensures efficient path and facade lighting. For effect lighting, colour-definable RGB LED modules are available as an alternative to the warm white LEDs. The bollard luminaires with their pleasant light invite people to linger and stay in the evening hours. During daytime they are an eye-catcher and emphasise the design of outdoor areas. The luminaires are ideal for integrating into architectural environments thanks to their high design quality.



### **Lumega IQ**

Beautiful and smart cities have a clever ally: Lumega IQ LED. Be it main road, car park or residential area – the highly flexible luminaire range brings excellent light to any application area. Its consistently minimalist, modern design blends harmoniously into any environment while state-of-the-art technologies guarantee maximum efficiency and sustainability. Lumega IQ LED is also ideally equipped for the future thanks to IoT interface networking capability.



### **Skeo Q-B LED bollard**

With the diverse Skeo Q LED range of luminaires the complete sector of light around the building can be carried out with a uniform design – ranging from facades to paths and entrances. The luminaires feature not only a linear design but also excellent lighting technology.



### **Solegra LED surface-mounted luminaire**

Solegra LED floats below the ceiling like a large sun. With its uniform, glare-free light and modern, purist design this series of round luminaires lends any room a special look, and is ideal for e.g. creative zones, VDU workstations and prestigious sales spaces.



### **Belviso C2 LED ceiling-recessed luminaire**

The Belviso luminaire family represents high quality lighting solutions together with glare-free light and unusual lighting effects. The exclusive light frame makes the Belviso Cluster ceiling luminaires unmistakable, creates a unique light appearance and underlines the completely harmonious illumination of the light surface. The colour-illuminated light frame is available optionally and achieves an emotional upgrading of the lighting design. Five expressive alternatives mean that diverse, room-specific or individual colour codings can be selected.



### **Sonnos**

Many functions and one world of design: the modularly designed Sonnos LED range of downlights can implement all lighting tasks in a uniform design and quality of light thanks to the wide selection of lighting technologies, optics and surface-mounting options.



#### **Arimo Fit D LED surface-mounted luminaire**

Thanks to the wide range of optics, module sizes and mounting methods (lay-in, recessed and surface-mounted solution), all lighting tasks for planar lighting in offices can be solved with the Arimo Fit LED luminaire range.



#### **Parelia LED suspended luminaire**

The continuous line-capable Parelia LED is perfect for lighting concepts parallel to the building axis. The luminaire can be positioned centrally above the desk without the direct component causing reflected glare. The lateral light line creates an attractive room atmosphere.