



PROJECT: HYGI.DE GMBH & CO. KG (2. BAUABSCHNITT)

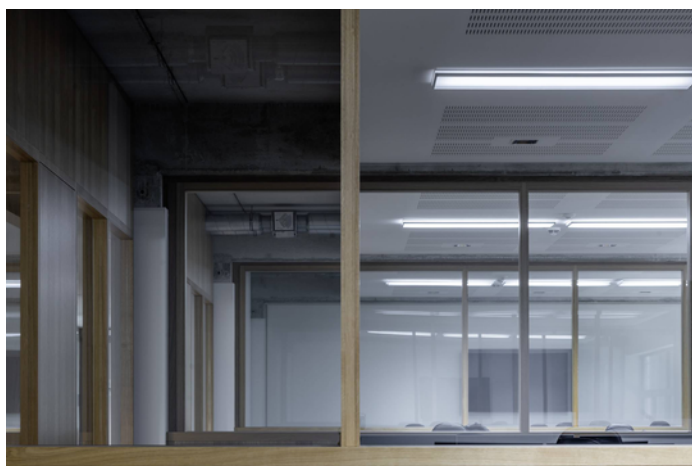


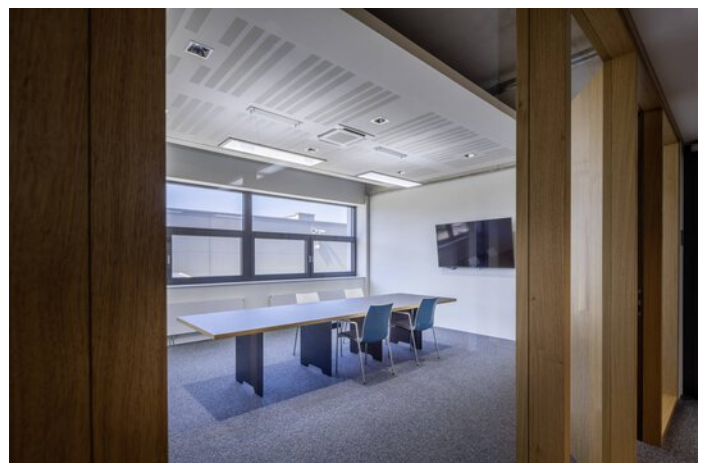
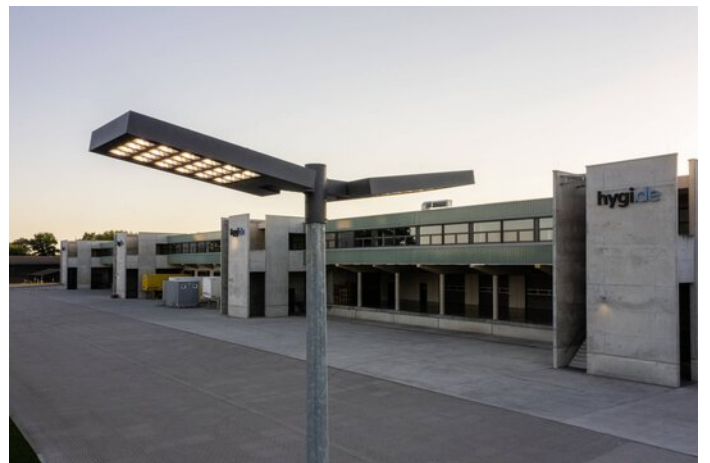
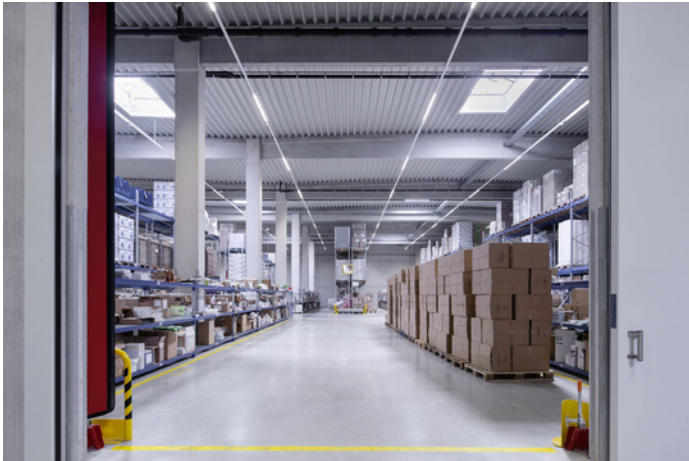
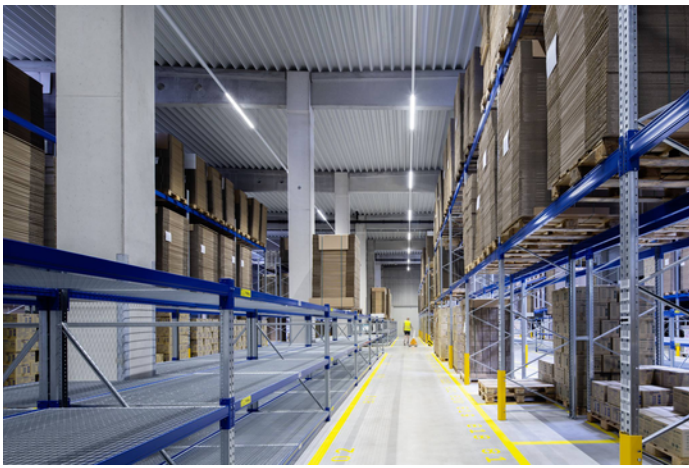
Project information

City: 48291 Telgte / Germany

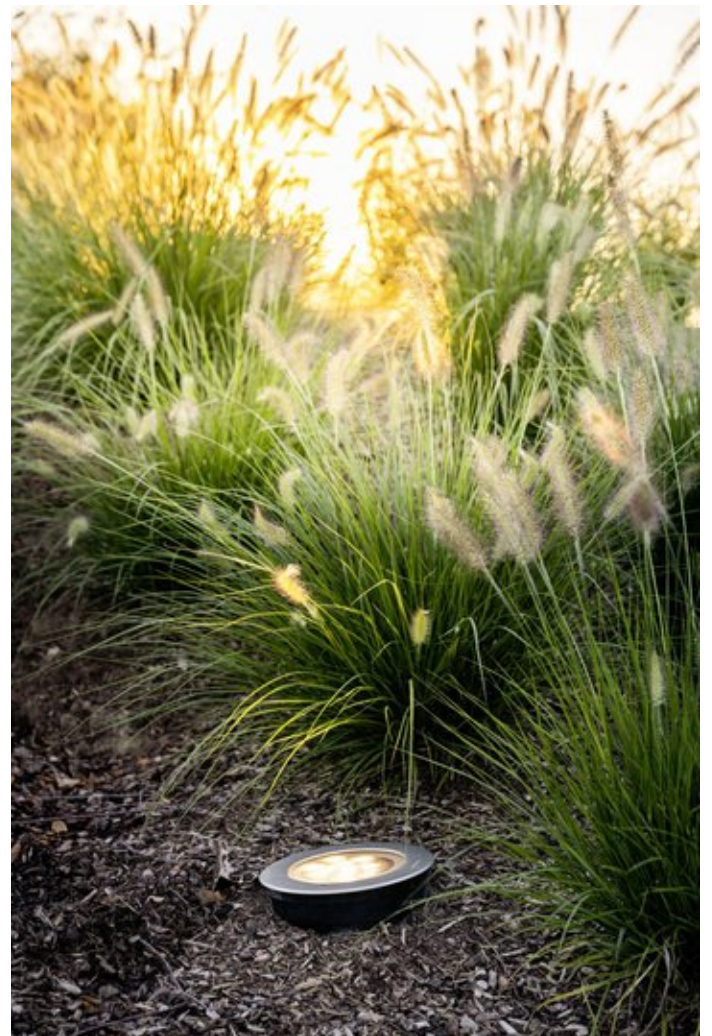
PROJECT DETAILS

Project images









Products used



8841 LED bollard

The 8841 LED product range scores with a characteristically high-profile appearance and a diversity of luminaire versions. Various wide light distributions and different luminous flux packages provide maximum visual comfort and guarantee perfect illumination, enabling large spacing between the bollards.



Belviso D LED ceiling surface-mounted luminaire

The Belviso luminaire family represents high quality lighting solutions together with glare-free light and unusual lighting effects. The exclusive light frame makes the Belviso Cluster ceiling luminaires unmistakable, creates a unique light appearance and underlines the completely harmonious illumination of the light surface. The colour-illuminated light frame is available optionally and achieves an emotional upgrading of the lighting design. Five expressive alternatives mean that diverse, room-specific or individual colour codings can be selected.



E-Line NEXT modular continuous line

Still in the portfolio for the refurbishment and expansion of existing systems: the E-Line Fix continuous line system with trunking that has been tried and tested for many years. This ensures continuity and investment security for our customers and E-Line users - and is what the TRILUX after-sales promise stands for.



LiveLink Premium

Optimum, individually adapted light with minimum effort – now achieved thanks to the intuitive and reliable control of all light points. The simply installed, intelligent LiveLink light management system developed by TRILUX together with the sensor manufacturer STEINEL enables the highly simple planning and operation of even complex lighting system controls. The system features especially simple commissioning, deemed one of the major challenges with control systems – LiveLink intuitively guides planners and installers through pre-configured rooms with typical applications. Commissioning and operation is implemented using a graphical user interface on mobile iOS or Android end devices. With LiveLink, TRILUX offers simple and intelligent access to the world of light control.



Lutera ground recessed luminaires

The Lutera LED ground recessed luminaire from TRILUX is a multi-talent for outdoor use: it lends prestigious facades a modern appearance and at the same time provides safety for path zones around buildings. Thanks to high-quality components, the luminaire has a long service life and low maintenance requirements.



Sonnos

Many functions and one world of design: the modularly designed Sonnos LED range of downlights can implement all lighting tasks in a uniform design and quality of light thanks to the wide selection of lighting technologies, optics and surface-mounting options.

