



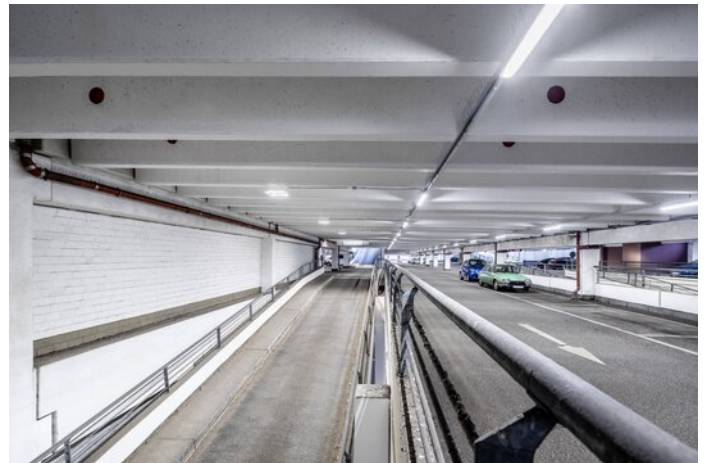
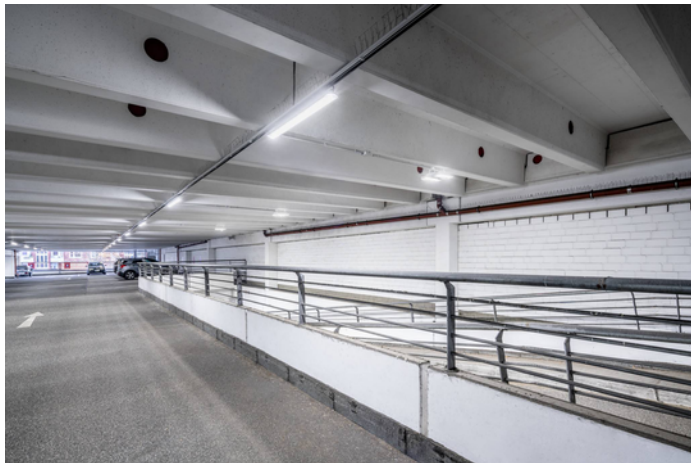
PROJECT: PARKHAUS DEUTSCHE PARKEN GMBH

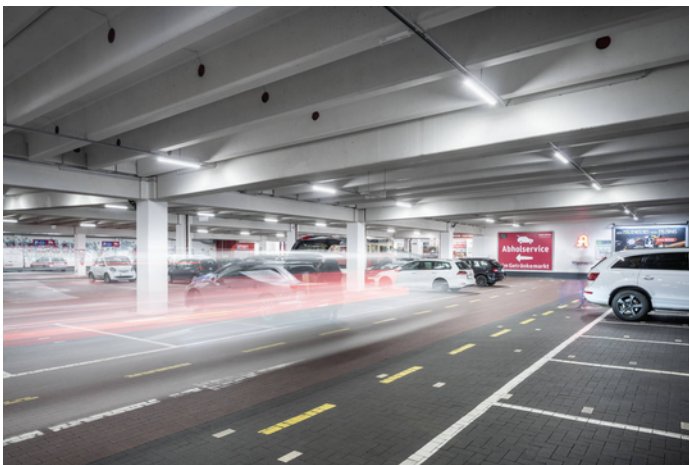


Project information

City: 22301 Hamburg / Germany

Project images





Products used



Nextrema LED surface-mounted luminaires IP66

Ice cold or boiling hot, damp or dusty – no problem for the Nextrema LED with its robust die-cast aluminium body in cold stores, food production facilities, distribution centres or car parks at temperatures of -30°C to +35°C. In addition to its robust exterior, the luminaire's quality of light is also impressive throughout: the light is pleasantly homogeneous, glare-free and especially energy-efficient. Installation is also particularly simple and time-saving thanks to a number of clever functions.



Mirona Fit LED highbay luminaire

Mirona Fit LED is the perfect lighting solution for challenging industrial surroundings. Thanks to its wide range of versions it is suitable for e.g. use in warehouses and distribution halls and the heavy industry and foodstuff industry, and emits reliable, uniform, glare-free light.
