



## PROJECT: DOKVAST NEW LOGIC 3



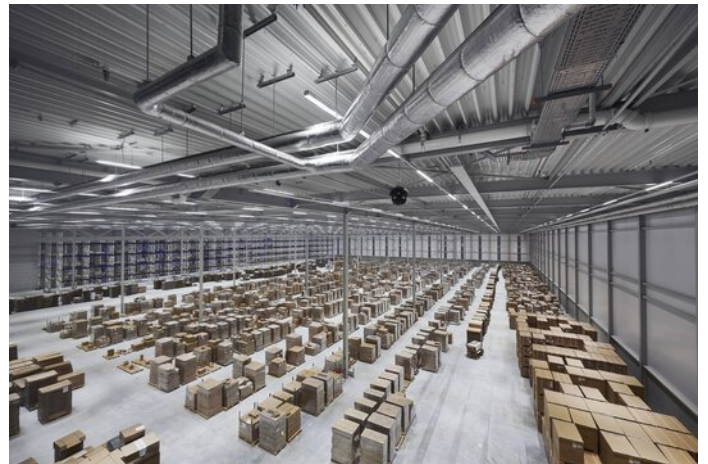
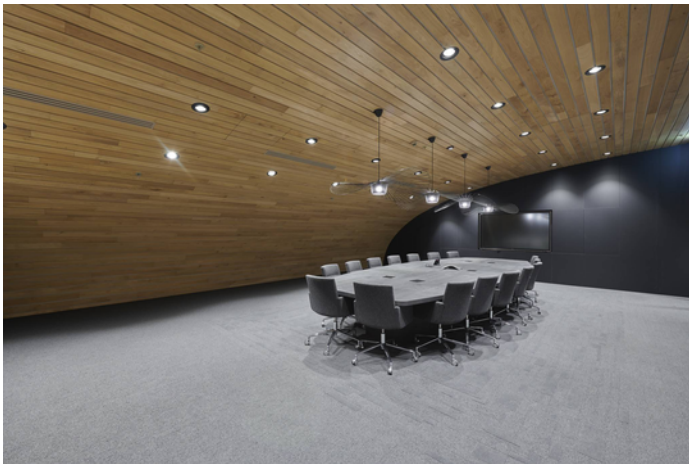
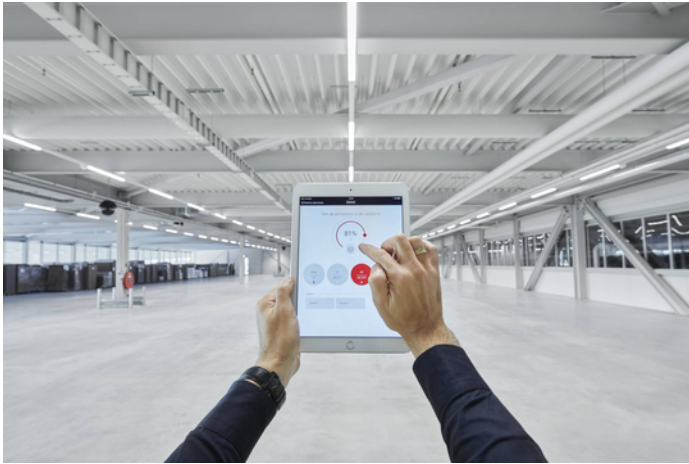
### Project information

City: 5026 RH Tilburg / Netherlands

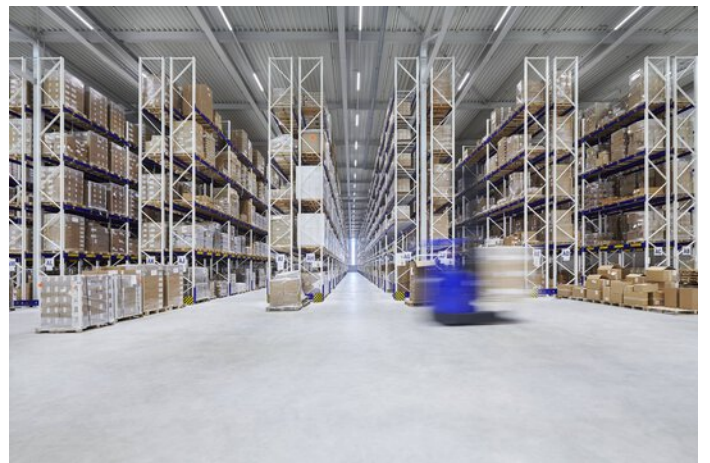
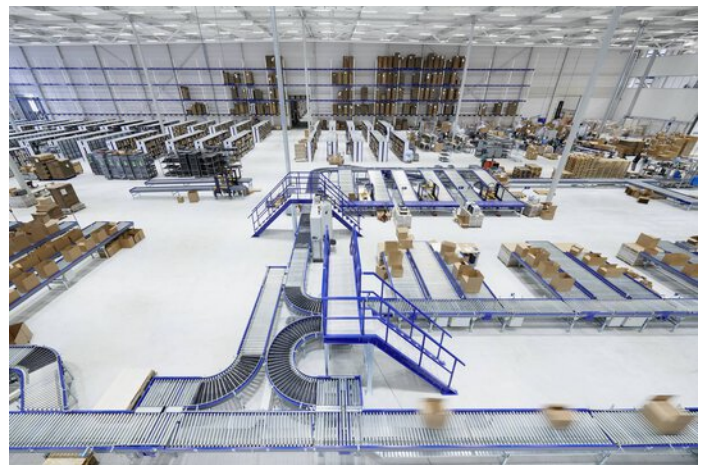
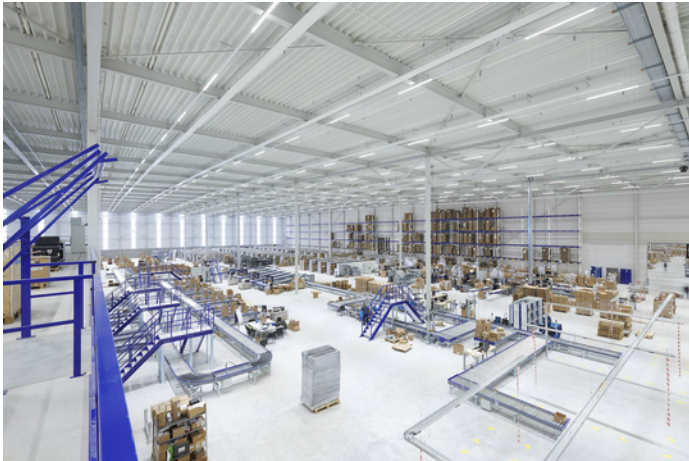
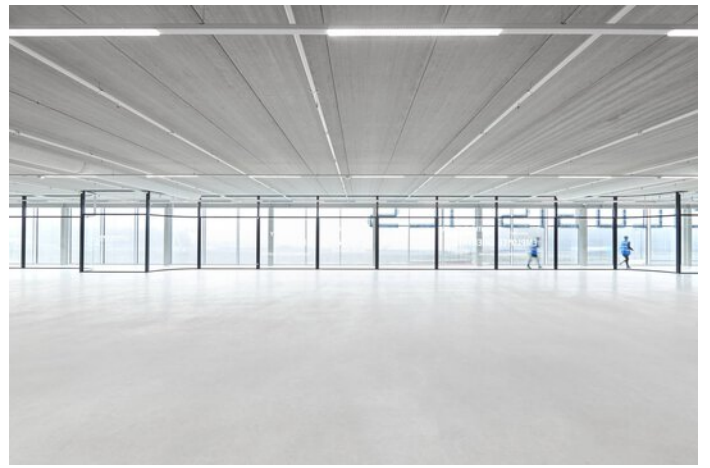
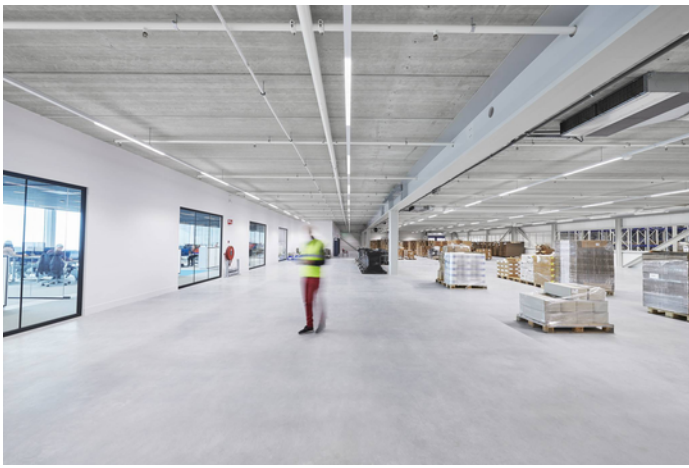
---

# PROJECT DETAILS

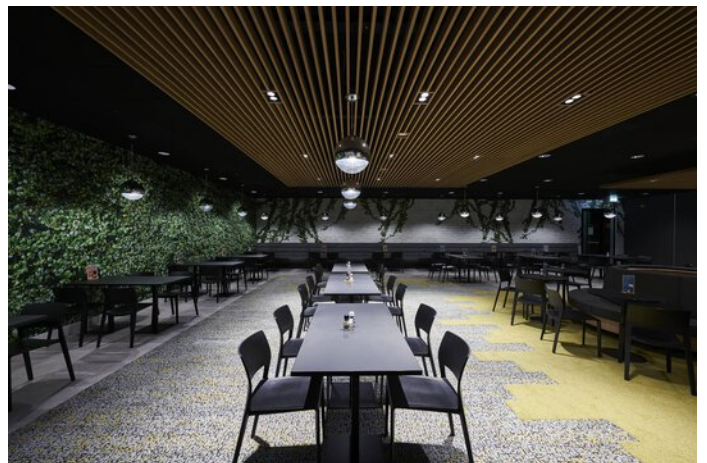
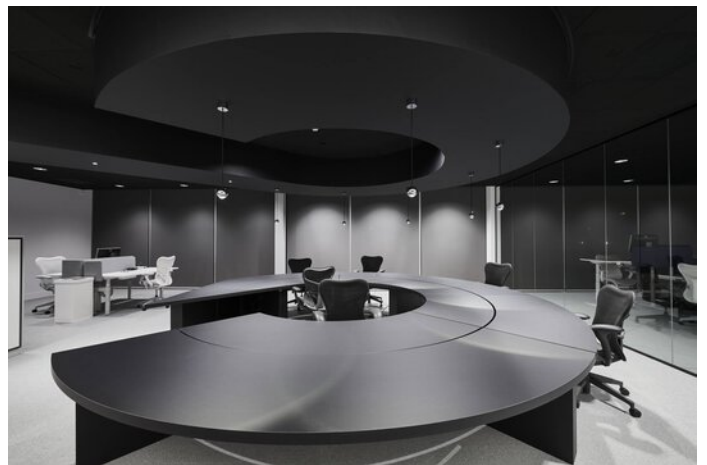
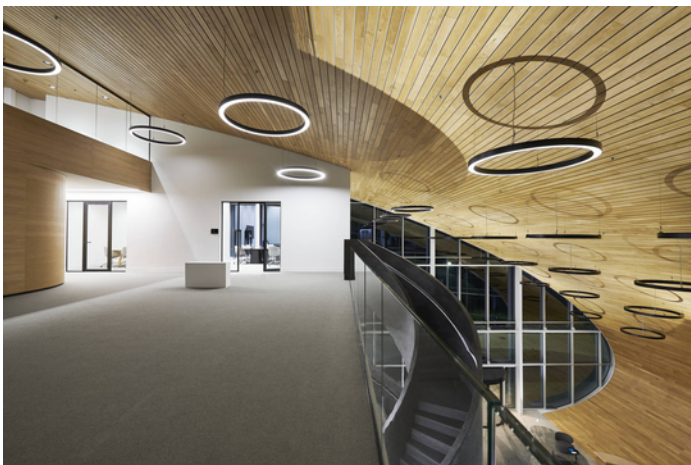
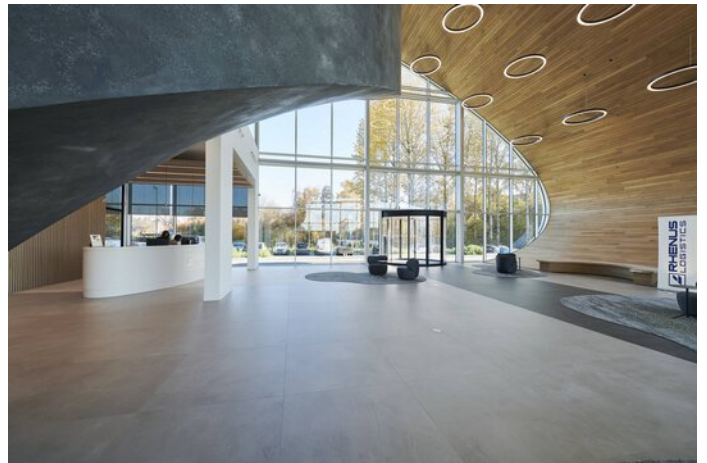
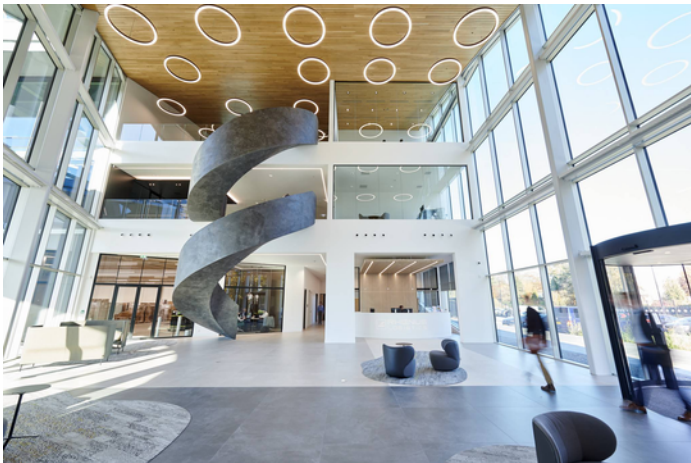
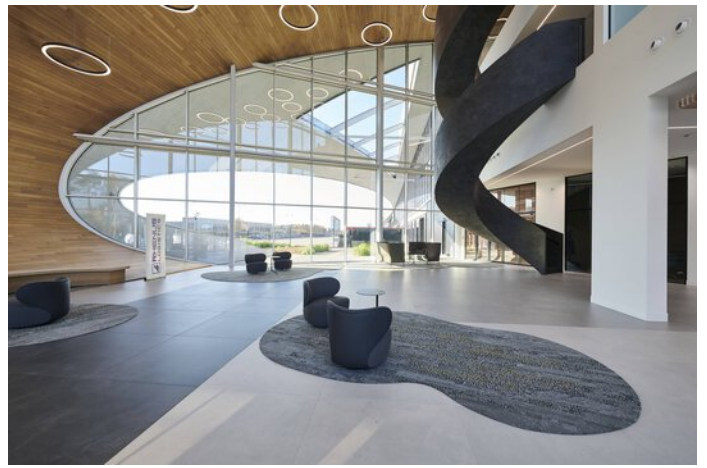
## Project images

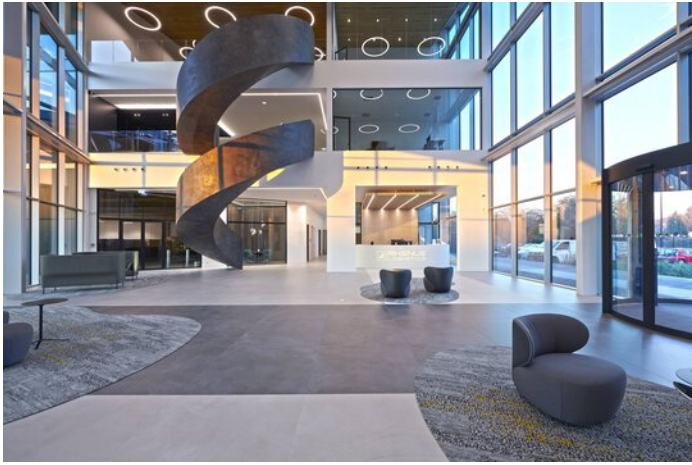














## Products used



### **Inperla Ligra Plus C05 LED downlight ceiling cutout Ø 140 mm**

Refurbishing was never so simple as with the easy-mounting and flexible Ligra Plus LED. With the cladding covers, the luminaire fits into nearly all existing ceiling cutouts and if required can be connected via mains through-wiring from luminaire to luminaire to save time. The Ligra Plus LED is available with different luminous flux packages and beam characteristics for the optimal illumination of a wide variety of rooms. All versions fulfil maximum demands for visual comfort and energy efficiency. And thanks to the diverse design versions, the Ligra Plus LED always blends harmoniously into the interior design.

---



### **Faciella**

Highlighting objects, surfaces and buildings – with Faciella LED the path to perfect light was never as simple. Completely different lighting tasks can be solved with a uniform design. The high-performance and energy-efficient projector is available in several construction sizes and with various luminous flux packages and beam angles for flexible use. The manually adjustable inclination angle simplifies precise targeting of the projector.

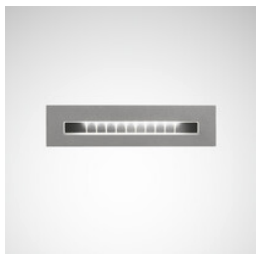
---



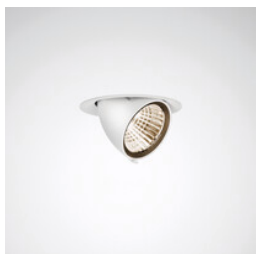
### **Lumega IQ**

Beautiful and smart cities have a clever ally: Lumega IQ LED. Be it main road, car park or residential area – the highly flexible luminaire range brings excellent light to any application area. Its consistently minimalist, modern design blends harmoniously into any environment while state-of-the-art technologies guarantee maximum efficiency and sustainability. Lumega IQ LED is also ideally equipped for the future thanks to IoT interface networking capability.

---



### **Pareda Slim**



### **Quira ceiling cut-out Ø130, Ø155**

Quira LED – the powerful recessed luminaire that scores with two recessing sizes. Quira LED can be swivelled in up to 15° while remaining flush with the ceiling. For vertical illumination, it can be swivelled out up to 70°. Available with standard white light colours and an Active LED module. This enables the precise adjustment of the light colour regarding intensity and colour temperature. There is a choice of three special light colours for the fresh goods area. Maximum power is selectable with lumen packages from 2,000 to 5,000 lm, while five different 3-D faceted reflectors provide pinpoint illumination. With Quira LED, smart light management can be implemented with a control line or wirelessly for low-installation modernisation. Quira LED is a product by our retail specialist Oktalite. With leading-technology products and a consistent focus on smart, networking-capable solutions, TRILUX is bringing the future of lighting to almost every area of application.

---



### **LiveLink Premium**

Optimum, individually adapted light with minimum effort – now achieved thanks to the intuitive and reliable control of all light points. The simply installed, intelligent LiveLink light management system developed by TRILUX together with the sensor manufacturer STEINEL enables the highly simple planning and operation of even complex lighting system controls. The system features especially simple commissioning, deemed one of the major challenges with control systems – LiveLink intuitively guides planners and installers through pre-configured rooms with typical applications. Commissioning and operation is implemented using a graphical user interface on mobile iOS or Android end devices. With LiveLink, TRILUX offers simple and intelligent access to the world of light control.

---