



PROJECT: BITTL SCHUHE + SPORT GMBH

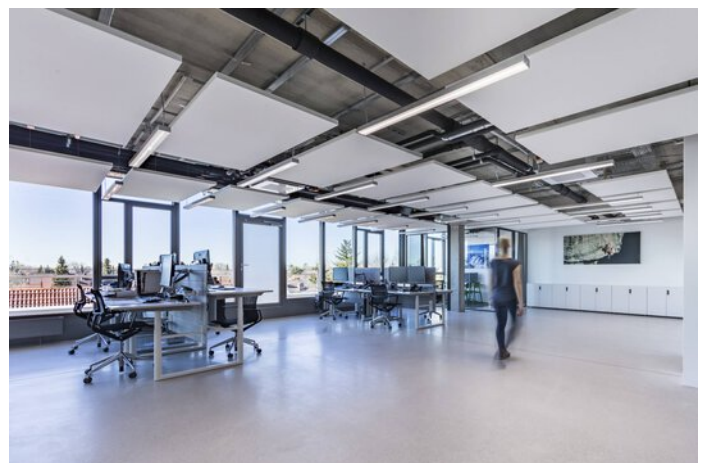
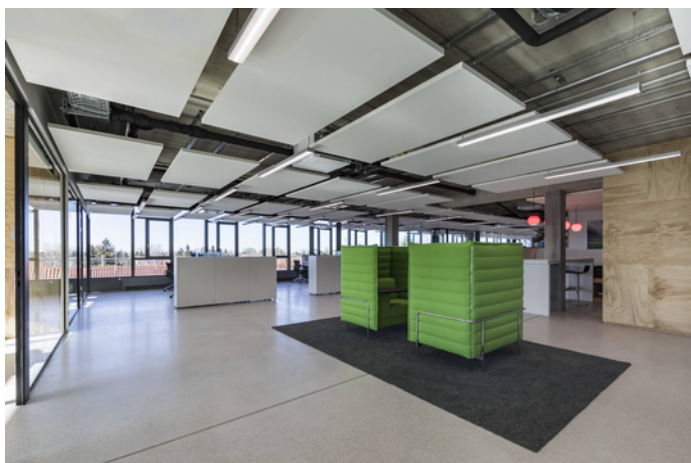
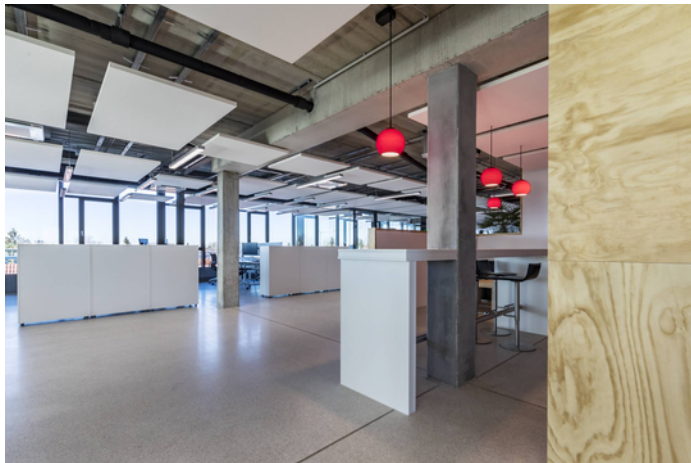
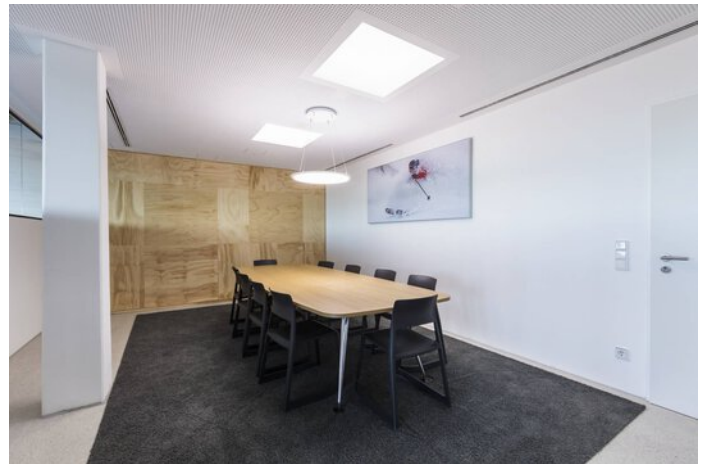


Project information

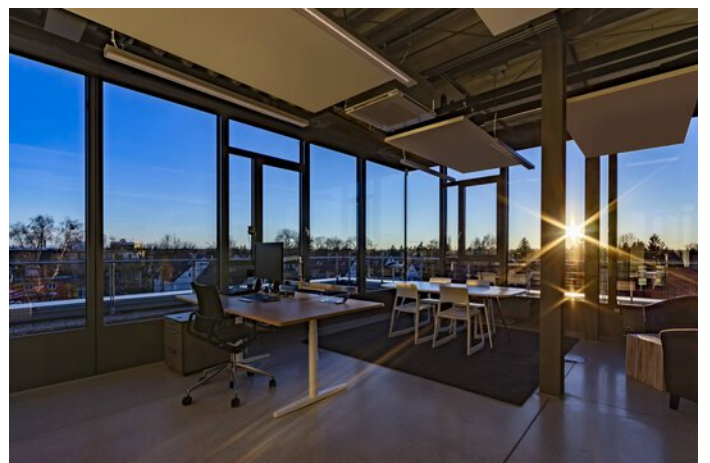
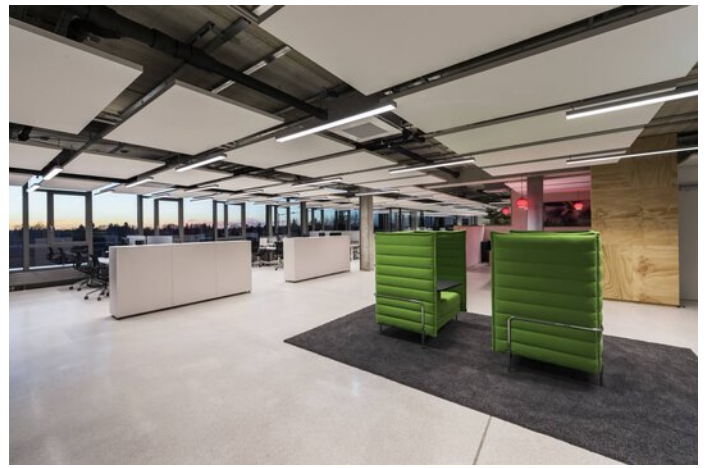
City: 80999 München / Germany

# PROJECT DETAILS

## Project images









## Products used



### **Solvan Flow H LED suspended luminaire**

Everything is possible, from single luminaires as recessed, surface-mounted and suspended versions to continuous lines with integrated emergency light function.

---