

X-RANGE

EN 12464-2:2014

5.1.4 Pedestrian passages, vehicle turning, loading and unloading points

50lx

$U_0 \geq 0,4$

$CRI \geq 20$

Date: 04.2016

Operator: Angebotsservice

TRILUX Vertrieb GmbH
 Heidestraße 4
 D-59759 Arnsberg

Operator **Angebotservice**
 Telephone **+49 29 32 301 94 11**
 Fax **+49 29 32 301 95 11**
 e-Mail **angebote@trilux.de**

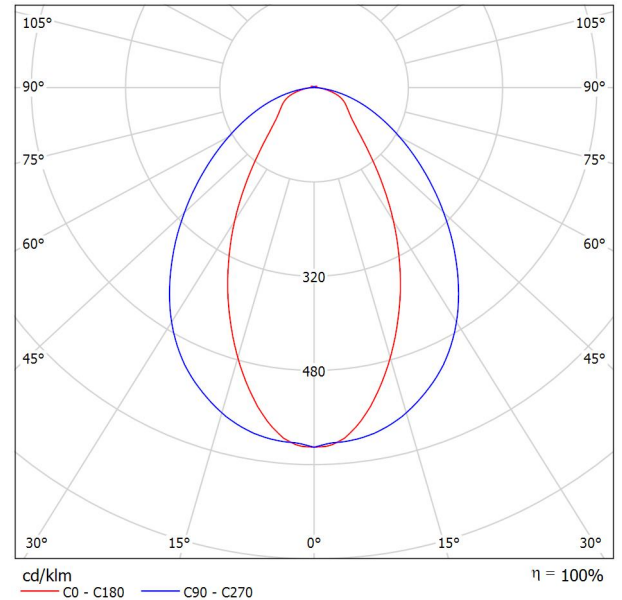
TRILUX Araxeon 1500 TB 6000-840 ETDD / Luminaire Data Sheet



Luminaire classification according to CIE: 98
 CIE flux code: 62 86 97 98 100

LED weather-proof surface-mounted luminaire IP66. For ceiling, wall and suspended mounting. Suspended mounting possible via optional accessories. Mounting with stainless steel fixing clamps (included). Theft-proof mounting possible via theft protection, to be ordered separately. With symmetric narrow-wide light distribution.. Luminaire luminous flux 6000 lm, connected load 42 W, luminous efficiency of luminaire 143 lm/W. Light colour neutral white, colour temperature 4000 K, colour rendering index Ra > 80. service life L80(tq 35 °C) = 50,000 h. Luminaire body of glass fibre-reinforced polyester, similar to RAL 7035 light grey. Diffuser of PMMA. Dimensions (L x W): 1500 mm x 88 mm, luminaire height 77 mm. Safety class I, protection rating IP66, impact resistance IK04/0,5 J, heat resistance 650 °C. Rapid-mount luminaire with Wieland rapid plug system. 5-pole-version for dimmable luminaires. Connection socket at one head side. With electronic transformer, digitally dimmable (DALI).

Luminous emittance 1:



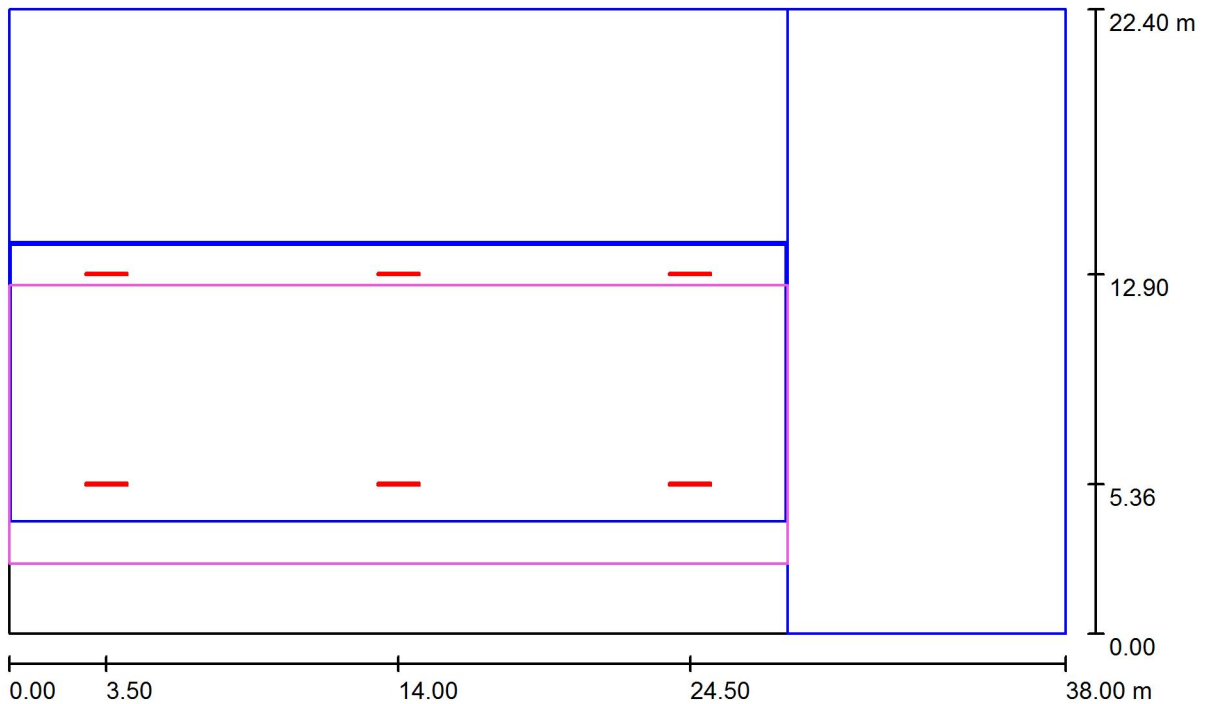
Luminous emittance 1:

Glare Evaluation According to UGR											
	70	70	50	50	30	70	70	50	50	30	
ρ Ceiling											
ρ Walls	50	30	50	30	30	50	30	50	30	30	
ρ Floor	20	20	20	20	20	20	20	20	20	20	
Room Size X Y	Viewing direction at right angles to lamp axis					Viewing direction parallel to lamp axis					
2H	2H	15.8	16.9	16.2	17.2	17.5	21.4	22.5	21.7	22.8	23.1
	3H	17.1	18.1	17.4	18.4	18.7	22.6	23.6	23.0	23.9	24.2
	4H	17.6	18.5	18.0	18.9	19.2	23.1	24.1	23.5	24.4	24.7
	6H	17.9	18.8	18.3	19.1	19.5	23.5	24.3	23.9	24.7	25.0
	8H	18.0	18.9	18.4	19.2	19.6	23.6	24.4	24.0	24.8	25.1
	12H	18.1	18.9	18.5	19.2	19.6	23.6	24.4	24.0	24.8	25.1
4H	2H	16.7	17.6	17.0	17.9	18.2	21.4	22.3	21.8	22.6	23.0
	3H	18.1	18.9	18.5	19.2	19.6	22.7	23.5	23.1	23.9	24.3
	4H	18.7	19.4	19.1	19.8	20.2	23.3	24.0	23.7	24.4	24.8
	6H	19.1	19.7	19.6	20.2	20.6	23.8	24.4	24.2	24.8	25.2
	8H	19.3	19.8	19.7	20.2	20.7	23.9	24.5	24.4	24.9	25.4
	12H	19.4	19.9	19.8	20.3	20.8	24.0	24.5	24.5	25.0	25.4
8H	4H	19.1	19.6	19.5	20.1	20.5	23.3	23.9	23.8	24.3	24.8
	6H	19.7	20.1	20.1	20.6	21.1	23.9	24.3	24.4	24.8	25.3
	8H	19.9	20.2	20.4	20.7	21.2	24.1	24.5	24.6	25.0	25.5
	12H	20.0	20.3	20.5	20.8	21.4	24.2	24.6	24.8	25.1	25.6
12H	4H	19.1	19.6	19.6	20.1	20.6	23.3	23.8	23.8	24.3	24.7
	6H	19.8	20.2	20.3	20.6	21.2	23.9	24.3	24.4	24.8	25.3
	8H	20.0	20.3	20.5	20.8	21.4	24.1	24.4	24.6	24.9	25.5
Variation of the observer position for the luminaire distances S											
S = 1.0H	+0.4 / -0.4					+0.2 / -0.2					
S = 1.5H	+0.7 / -0.7					+0.9 / -0.9					
S = 2.0H	+1.0 / -1.0					+1.8 / -1.8					
Standard table	BK05					BK05					
Correction Summand	2.3					7.2					
Corrected Glare Indices referring to 6000lm Total Luminous Flux											

TRILUX Vertrieb GmbH
 Heidestraße 4
 D-59759 Arnsberg

Operator: Angebotservice
 Telephone: +49 29 32 301 94 11
 Fax: +49 29 32 301 95 11
 e-Mail: angebote@trilux.de

Roofed outdoor area 6m - 50lx / Planning data



Maintenance factor: 0.80, ULR (Upward Light Ratio): 0.0%

Scale 1:272

50lx
 U_o ≥ 0,4

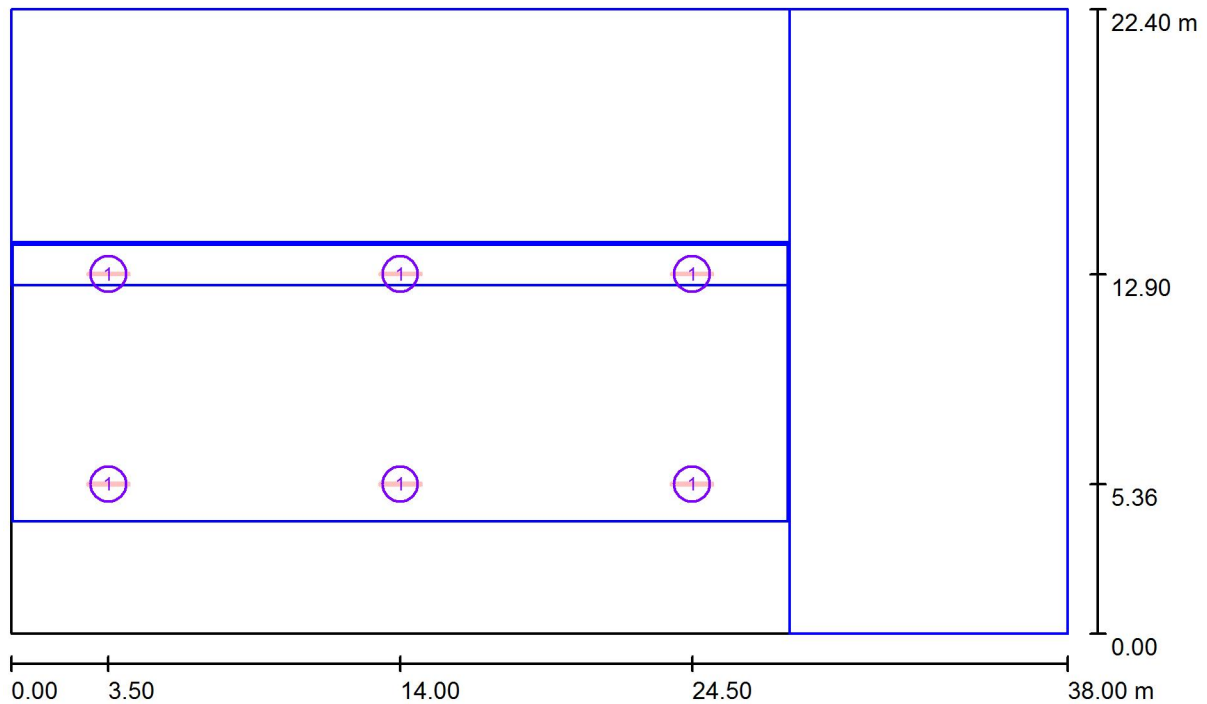
Luminaire Parts List

No.	Pieces	Designation (Correction Factor)	Φ (Luminaire) [lm]	Φ (Lamps) [lm]	P [W]
1	6	TRILUX Araxeon 1500 TB 6000-840 ETDD (1.000)	6000	6000	42.0
			Total: 35997	Total: 36000	252.0

TRILUX Vertrieb GmbH
 Heidestraße 4
 D-59759 Arnsberg

Operator Angebotservice
 Telephone +49 29 32 301 94 11
 Fax +49 29 32 301 95 11
 e-Mail angebote@trilux.de

Roofed outdoor area 6m - 50lx / Luminaires (layout plan)



Scale 1 : 272

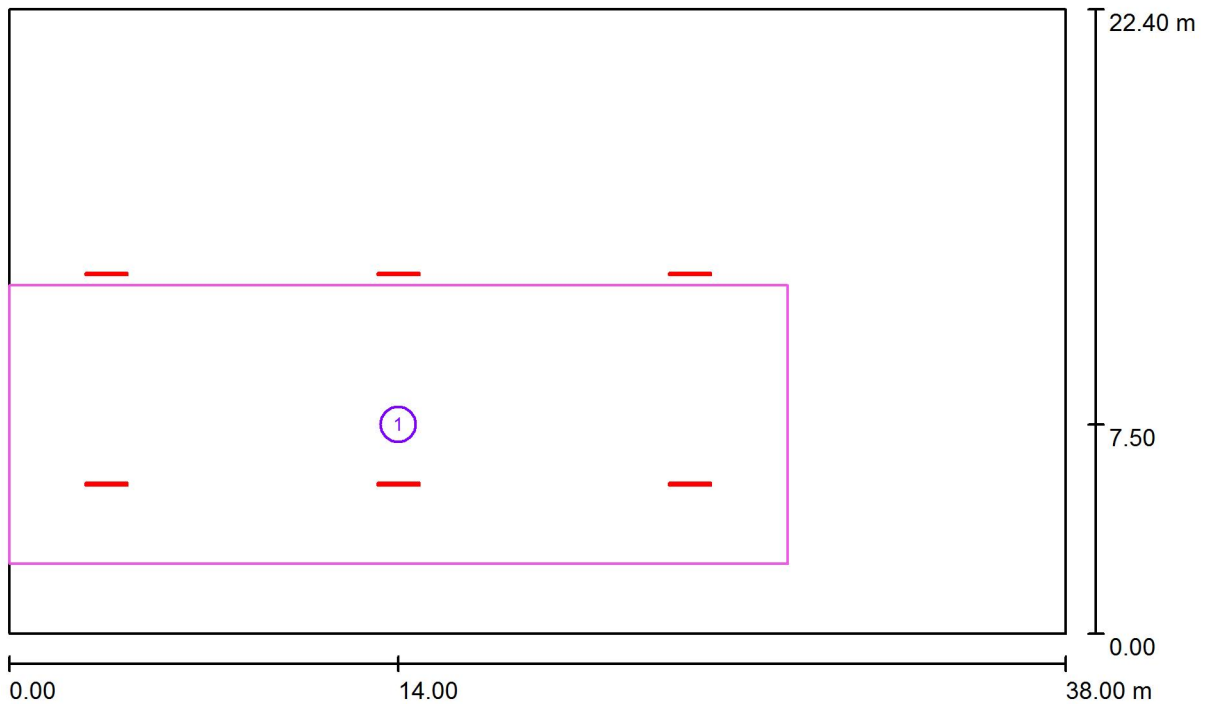
Luminaire Parts List

No.	Pieces	Designation
1	6	TRILUX Araxeon 1500 TB 6000-840 ETDD

TRILUX Vertrieb GmbH
 Heidestraße 4
 D-59759 Arnsberg

Operator Angebotservice
 Telephone +49 29 32 301 94 11
 Fax +49 29 32 301 95 11
 e-Mail angebote@trilux.de

Roofed outdoor area 6m - 50lx / Calculation surfaces (results overview)



Scale 1 : 272

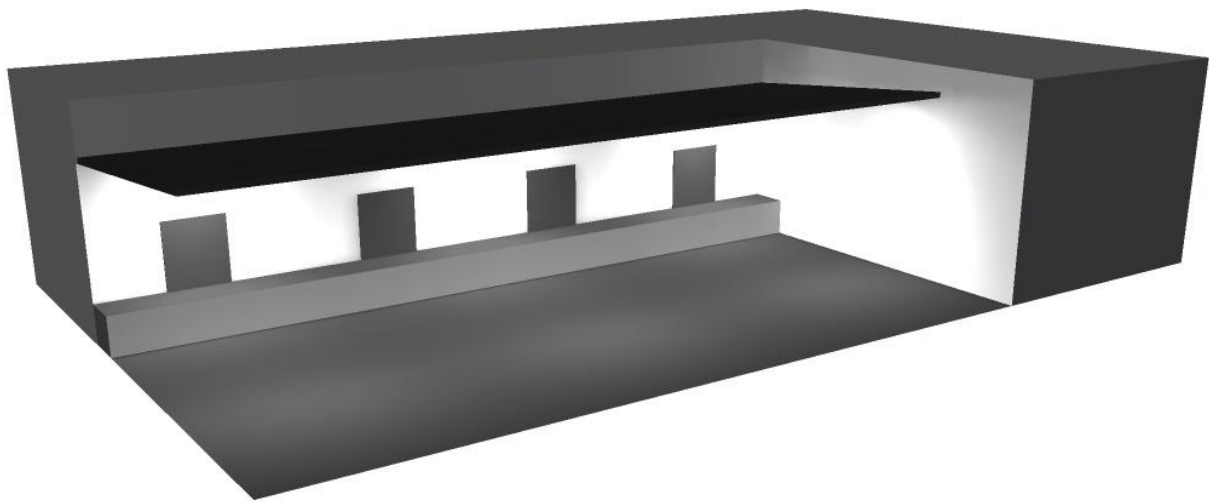
Calculation Surface List

No.	Designation	Type	Grid	E_{av} [lx]	E_{min} [lx]	E_{max} [lx]	u0	E_{min} / E_{max}
1	calculation surface	perpendicular	23 x 7	52	33	84	0.620	0.386

TRILUX Vertrieb GmbH
Heidestraße 4
D-59759 Arnsberg

Operator Angebotservice
Telephone +49 29 32 301 94 11
Fax +49 29 32 301 95 11
e-Mail angebote@trilux.de

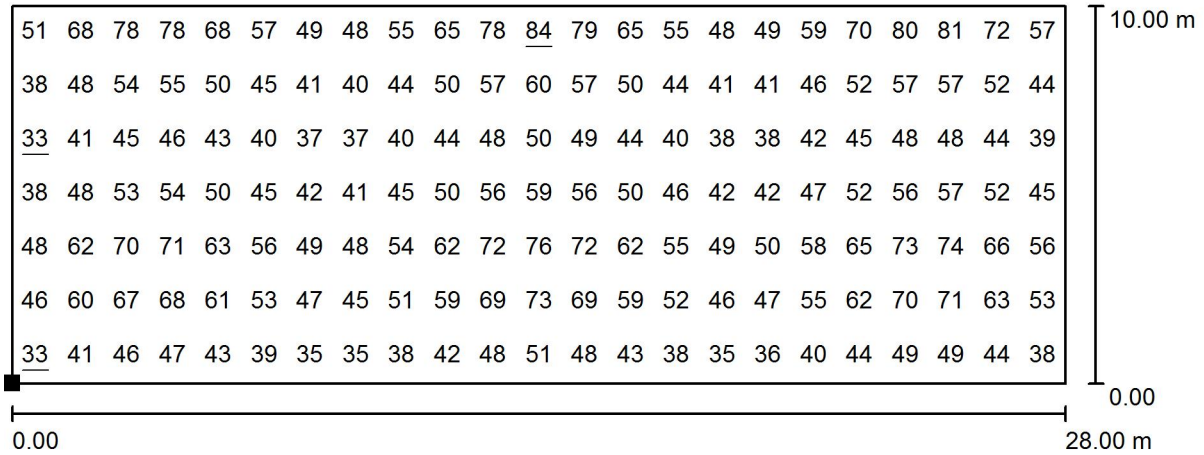
Roofed outdoor area 6m - 50lx / 3D Rendering



TRILUX Vertrieb GmbH
 Heidestraße 4
 D-59759 Arnsberg

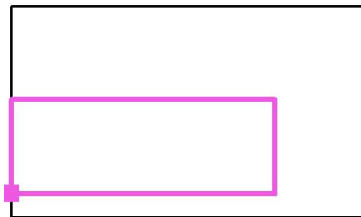
Operator Anbotsservice
 Telephone +49 29 32 301 94 11
 Fax +49 29 32 301 95 11
 e-Mail angebote@trilux.de

Roofed outdoor area 6m - 50lx / calculation surface / Value Chart (E, Perpendicular)



Values in Lux, Scale 1 : 201

Position of surface in external scene:
 Marked point:
 (0.000 m, 2.500 m, 0.050 m)



Grid: 23 x 7 Points

E_{av} [lx]
52

E_{min} [lx]
33

E_{max} [lx]
84

u_0
0.620

E_{min} / E_{max}
0.386