

X-RANGE

EN 12464-1:2011
5.12.1 Food stuffs and luxury food industry
200lx - UGR \leq 25
U_o \geq 0,4 - Ra \geq 80

TRILUX Vertrieb GmbH
 Heidestraße 4
 D-59759 Arnsberg

Operator **Angebotservice**
 Telephone **+49 29 32 301 94 11**
 Fax **+49 29 32 301 95 11**
 e-Mail **angebote@trilux.de**

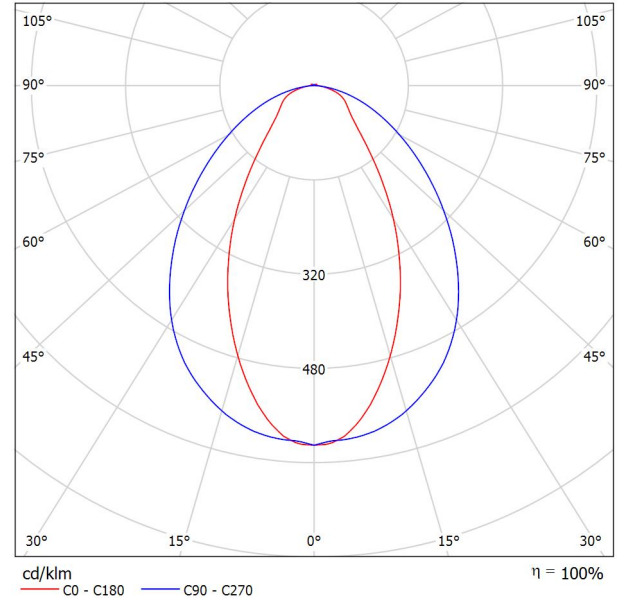
TRILUX Araxeon 1500 TB 6000-840 ETDD / Luminaire Data Sheet



Luminaire classification according to CIE: 98
 CIE flux code: 62 86 97 98 100

LED weather-proof surface-mounted luminaire IP66. For ceiling, wall and suspended mounting. Suspended mounting possible via optional accessories. Mounting with stainless steel fixing clamps (included). Theft-proof mounting possible via theft protection, to be ordered separately. With symmetric narrow-wide light distribution.. Luminaire luminous flux 6000 lm, connected load 42 W, luminous efficiency of luminaire 143 lm/W. Light colour neutral white, colour temperature 4000 K, colour rendering index Ra > 80. service life L80(tq 35 °C) = 50,000 h. Luminaire body of glass fibre-reinforced polyester, similar to RAL 7035 light grey. Diffuser of PMMA. Dimensions (L x W): 1500 mm x 88 mm, luminaire height 77 mm. Safety class I, protection rating IP66, impact resistance IK04/0,5 J, heat resistance 650 °C. Rapid-mount luminaire with Wieland rapid plug system. 5-pole-version for dimmable luminaires. Connection socket at one head side. With electronic transformer, digitally dimmable (DALI).

Luminous emittance 1:



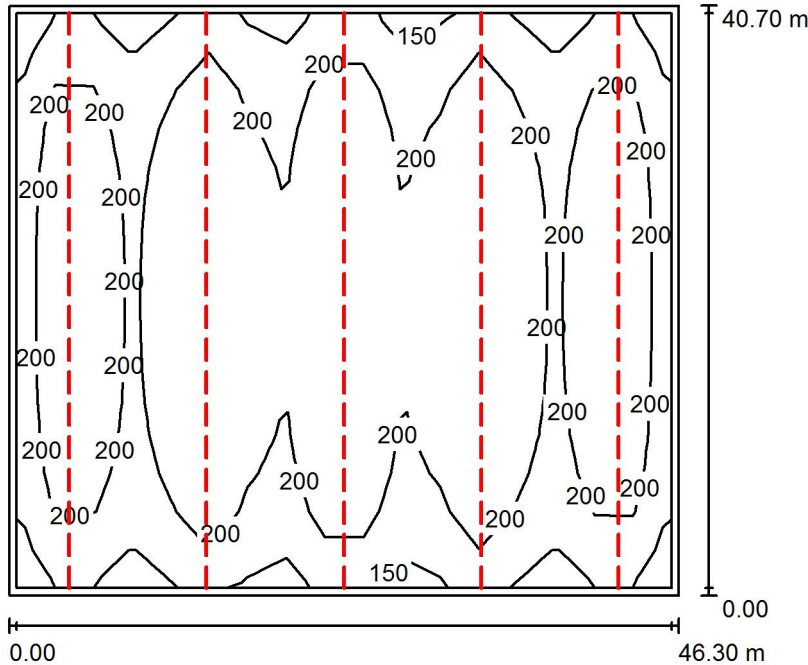
Luminous emittance 1:

Glare Evaluation According to UGR											
	70	70	50	50	30	70	70	50	50	30	
ρ Ceiling											
ρ Walls	50	30	50	30	30	50	30	50	30	30	
ρ Floor	20	20	20	20	20	20	20	20	20	20	
Room Size X Y	Viewing direction at right angles to lamp axis					Viewing direction parallel to lamp axis					
2H	2H	15.8	16.9	16.2	17.2	17.5	21.4	22.5	21.7	22.8	23.1
	3H	17.1	18.1	17.4	18.4	18.7	22.6	23.6	23.0	23.9	24.2
	4H	17.6	18.5	18.0	18.9	19.2	23.1	24.1	23.5	24.4	24.7
	6H	17.9	18.8	18.3	19.1	19.5	23.5	24.3	23.9	24.7	25.0
	8H	18.0	18.9	18.4	19.2	19.6	23.6	24.4	24.0	24.8	25.1
	12H	18.1	18.9	18.5	19.2	19.6	23.6	24.4	24.0	24.8	25.1
4H	2H	16.7	17.6	17.0	17.9	18.2	21.4	22.3	21.8	22.6	23.0
	3H	18.1	18.9	18.5	19.2	19.6	22.7	23.5	23.1	23.9	24.3
	4H	18.7	19.4	19.1	19.8	20.2	23.3	24.0	23.7	24.4	24.8
	6H	19.1	19.7	19.6	20.2	20.6	23.8	24.4	24.2	24.8	25.2
	8H	19.3	19.8	19.7	20.2	20.7	23.9	24.5	24.4	24.9	25.4
	12H	19.4	19.9	19.8	20.3	20.8	24.0	24.5	24.5	25.0	25.4
8H	4H	19.1	19.6	19.5	20.1	20.5	23.3	23.9	23.8	24.3	24.8
	6H	19.7	20.1	20.1	20.6	21.1	23.9	24.3	24.4	24.8	25.3
	8H	19.9	20.2	20.4	20.7	21.2	24.1	24.5	24.6	25.0	25.5
	12H	20.0	20.3	20.5	20.8	21.4	24.2	24.6	24.8	25.1	25.6
12H	4H	19.1	19.6	19.6	20.1	20.6	23.3	23.8	23.8	24.3	24.7
	6H	19.8	20.2	20.3	20.6	21.2	23.9	24.3	24.4	24.8	25.3
	8H	20.0	20.3	20.5	20.8	21.4	24.1	24.4	24.6	24.9	25.5
Variation of the observer position for the luminaire distances S											
S = 1.0H	+0.4 / -0.4					+0.2 / -0.2					
S = 1.5H	+0.7 / -0.7					+0.9 / -0.9					
S = 2.0H	+1.0 / -1.0					+1.8 / -1.8					
Standard table	BK05					BK05					
Correction Summand	2.3					7.2					
Corrected Glare Indices referring to 6000lm Total Luminous Flux											

TRILUX Vertrieb GmbH
 Heidestraße 4
 D-59759 Arnsberg

Operator: Angebotservice
 Telephone: +49 29 32 301 94 11
 Fax: +49 29 32 301 95 11
 e-Mail: angebote@trilux.de

Foodproduction 8m -200lx / Summary



Height of Room: 8.000 m, Mounting Height: 8.000 m, Maintenance factor: 0.80

Values in Lux, Scale 1:523

Surface	ρ [%]	E_{av} [lx]	E_{min} [lx]	E_{max} [lx]	u_0
Workplane	/	205	133	281	0.649
Floor	20	201	88	281	0.437
Ceiling	50	42	27	274	0.650
Walls (4)	30	90	38	597	/

Workplane:

Height: 0.100 m
 Grid: 17 x 15 Points
 Boundary Zone: 0.500 m

Luminaire Parts List

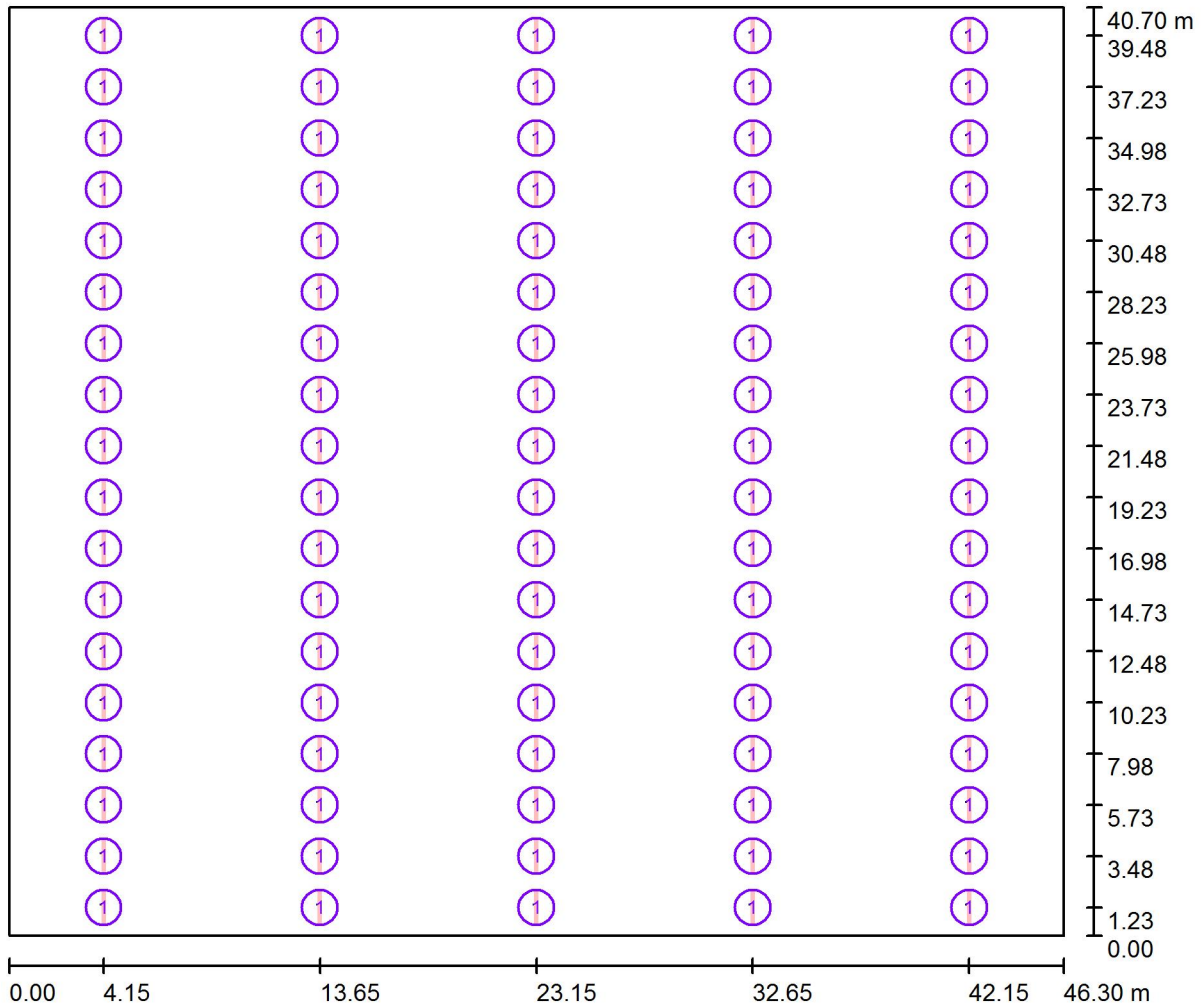
No.	Pieces	Designation (Correction Factor)	Φ (Luminaire) [lm]	Φ (Lamps) [lm]	P [W]
1	90	TRILUX Araxeon 1500 TB 6000-840 ETDD (1.000)	6000	6000	42.0
			Total: 539956	Total: 540000	3780.0

Specific connected load: $2.01 \text{ W/m}^2 = 0.98 \text{ W/m}^2/100 \text{ lx}$ (Ground area: 1884.41 m^2)

TRILUX Vertrieb GmbH
 Heidestraße 4
 D-59759 Arnsberg

Operator Angebotservice
 Telephone +49 29 32 301 94 11
 Fax +49 29 32 301 95 11
 e-Mail angebote@trilux.de

Foodproduction 8m -200lx / Luminaires (layout plan)



Scale 1 : 332

Luminaire Parts List

No.	Pieces	Designation
1	90	TRILUX Araxeon 1500 TB 6000-840 ETDD